

Note:

Materials:

- .Plunger: Brass 0.75um Au over Ni
- .Barrel: Brass 0.25um Au over Ni
- .Spring: SUS surface treatment

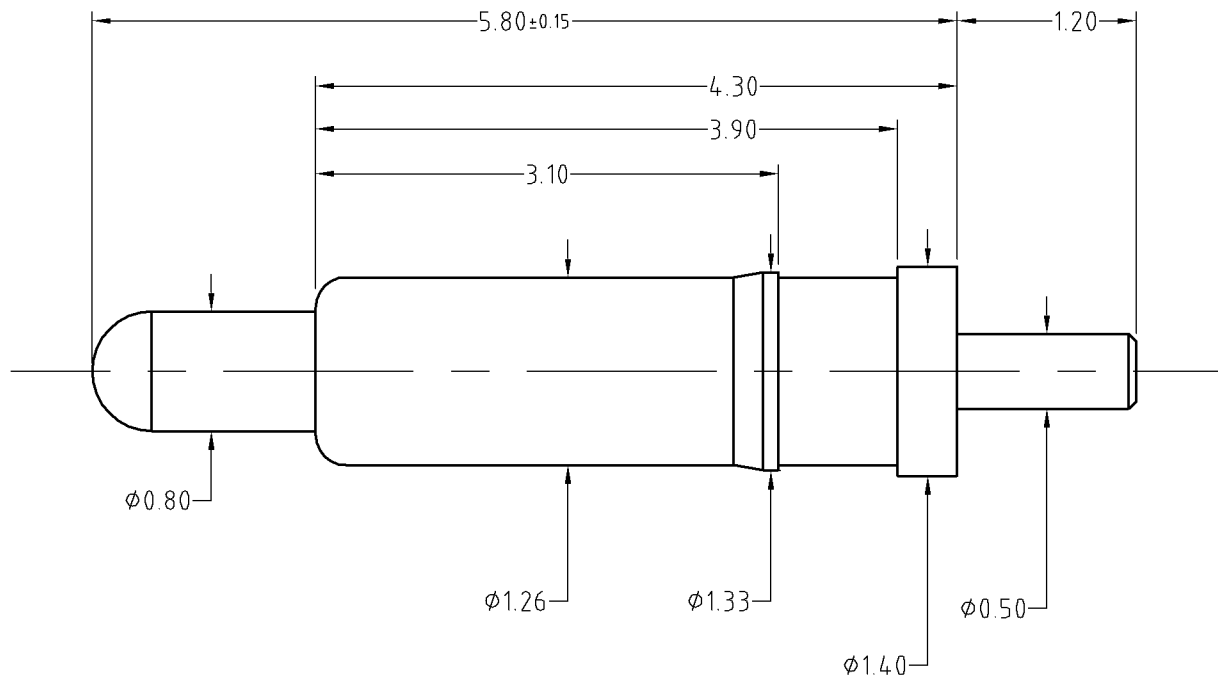
Mechanical:

- .Contact force: 80g±20g at 0.9mm working stroke
- .Full stroke: 1.1mm
- .Life test: 20,000 cycles

Electrical:

- .Rated current & voltage: DC 12V, 1A
- .Contact resistance: 50 milliohm Max.

To ensure the best usage, please operate it based on the working height.  
Based on the engineering drawings, shall not exceed the maximum allowed compression.



Approve Sign

BOM		
Part	NO.	Qty
Plunger	B291-P1030	1
Barrel	B291-B1010	1
Spring	B291-S1001	1

SCALE	10:1	UNIT:mm	THIS DOCUMENT IS THE SOLE PROPERTY OF CFE CORPORATION CO.,LTD., AND SHOULD NOT BE USED IN WHOLE OR IN PART WITHOUT PRIOR WRITTEN PERMISSION.	SHEET: 1 of 1	PART NO.	BP29111
ANGEL	±1°	A4				
0-6	±0.05				FILE NAME	BP291XX
6-30	±0.10	DRAW			TITLE	Pogo pin connector
30-150	±0.15	CHECK				
GENERAL TOLERANCE UNLESS OTHERWISE NOTED		APPRO				



ECN(DCN) NO.	A0	2015.06.17	NEW
REV	DATE	DESCRIPTION	