

Note:

Materials:

- .Plunger: Brass 0.75um Au over Ni
- .Barrel: Brass 0.75um Au over Ni
- .Spring: SUS surface treatment

Mechanical:

- .Contact force: 100g±20% at 1.0mm working stroke
- .Full stroke:1.2mm
- .Life test: 20,000 cycles

Electrical:

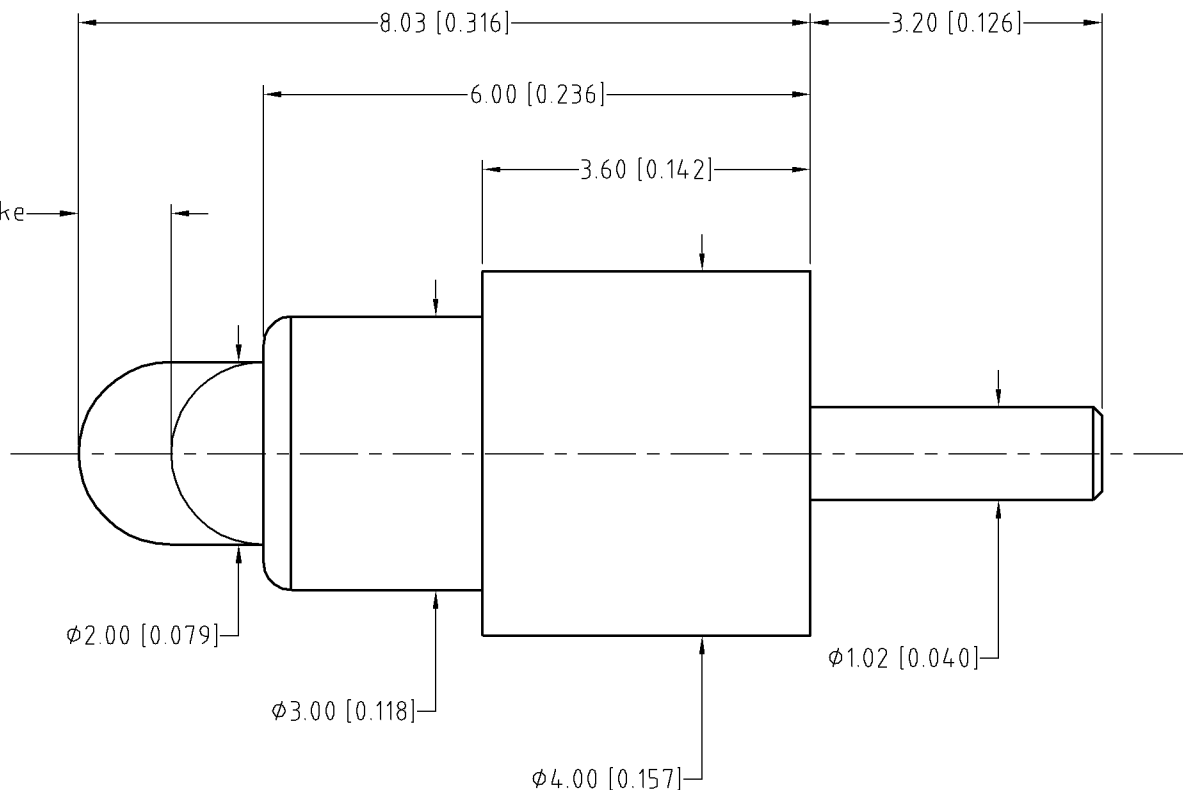
- .Rated current & voltage: DC 12V; 1A
- .Contact resistance: 50 milliohm Max.

To ensure the best usage, please operate it based on the working height.
Based on the engineering drawings, shall not exceed the maximum allowed compression.



Approve Sign

1.02 [0.040] working storke



SCALE	10:1	UNIT	in	THIS DOCUMENT IS THE SOLE PROPERTY OF CFE CORPORATION CO.,LTD., AND SHOULD NOT BE USED IN WHOLE OR IN PART WITHOUT PRIOR WRITTEN PERMISSION.	CFE 东莞市川富电子有限公司 CFE CORPORATION CO.,LTD.
ANGEL	±1°	A4			
0~0.236	±0.002			SHEET: 1 of 1	
0.236~1.181	±0.004	DRAW			PART NO. BP29511
1.181~5.905	±0.006	CHECK			FILE NAME BP295XX
GENERAL TOLERANCE UNLESS OTHERWISE NOTED		APPRO			TITLE. Pogo pin connector

ECN(DCN) NO.	D0	2014.10.24	NEW
REV	DATE	DESCRIPTION	