

1

2

3

4

Note:

Materials:

.Plunger: Brass 0.75um Au over Ni

.Barrel: Brass 0.5um Au over Ni

.Spring: SUS insulate coating

Mechanical:

.Contact force: 70g±15g at 0.9mm working stroke

.Full stroke: 1.6mm

.Life test: 20,000 cycles

Electrical(working stroke):

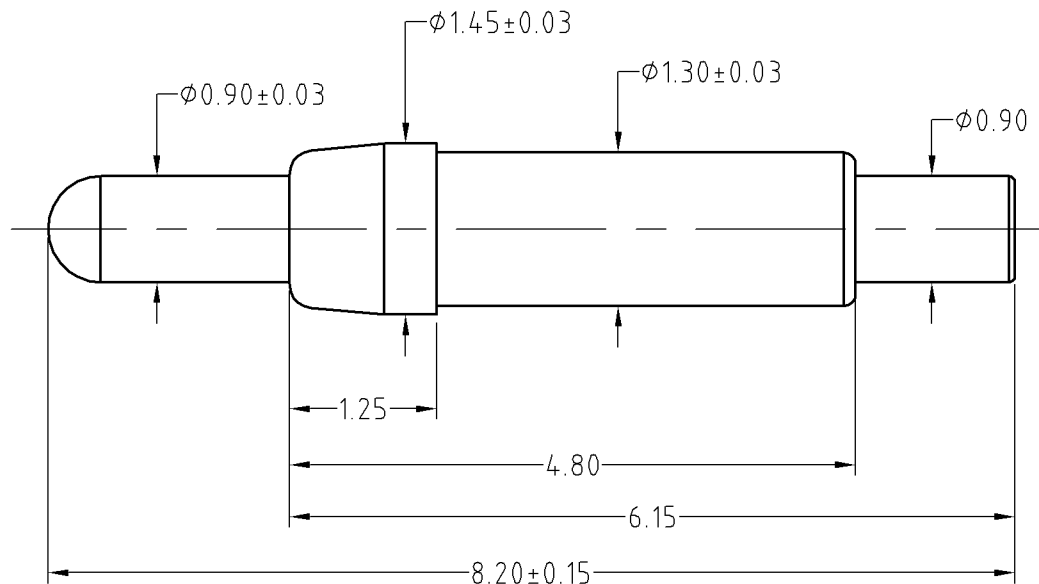
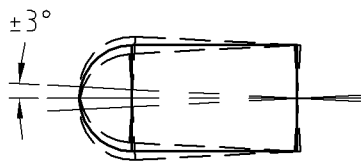
.Rated current & voltage: DC12V; 5A Max.

.Contact resistance: 50 milliohm Max.

To ensure the best usage, please operate it based on the working height.
Based on the engineering drawings, shall not exceed the maximum allowed compression.



Approve Sign



SCALE	10:1	UNIT:mm	THIS DOCUMENT IS THE SOLE PROPERTY OF CFE CORPORATION CO.,LTD., AND SHOULD NOT BE USED IN WHOLE OR IN PART WITHOUT PRIOR WRITTEN PERMISSION.	
ANGEL	±1°	A4	SHEET: 1 of 1	
0~6	±0.05		PART NO. BP30902	
6~30	±0.10	DRAW	FILE NAME BP309XX	
30~150	±0.15	CHECK	TITLE. Pogo pin connector	
GENERAL TOLERANCE UNLESS OTHERWISE NOTED		APPRO		



ECN(DCN) NO.	D0	2013.05.30	NEW
REV	DATE	DESCRIPTION	