

1

2

3

4

Note:

Materials: To ensure the best usage, please operate it based on the working height.
Based on the engineering drawings, shall not exceed the maximum allowed compression.

.Plunger & plug: Brass 0.125um Au over Ni
.Barrel: Brass 0.125um Au over Ni
.Spring: SUS surface treatment

Mechanical:

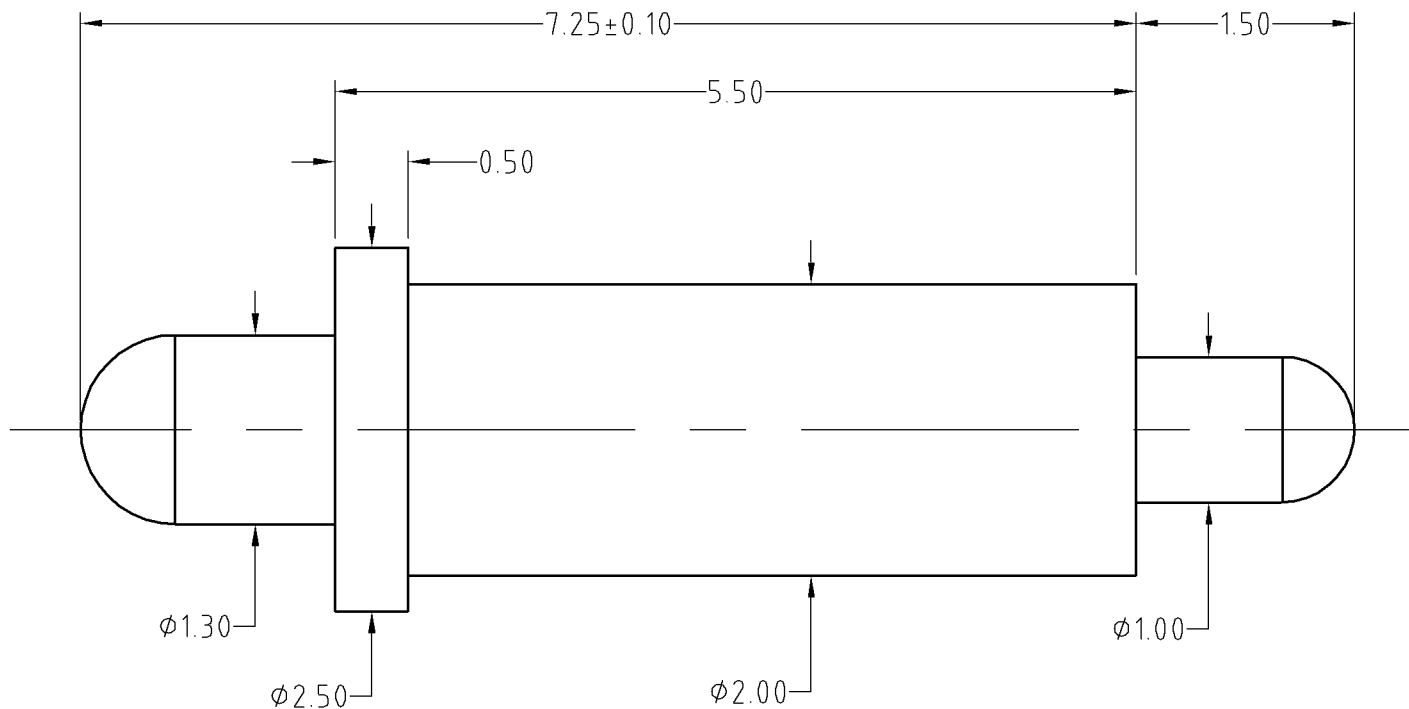
.Contact force: 65g±20g at 1.0mm working stroke
.Full stroke: 1.75mm
.Life test: 20,000 cycles

Electrical:

.Rated current & voltage: DC 12V; 1A
.Contact resistance: 50 milliohm Max.



Approve Sign



SCALE	10:1	UNIT:mm	THIS DOCUMENT IS THE SOLE PROPERTY OF CFE CORPORATION CO.,LTD., AND SHOULD NOT BE USED IN WHOLE OR IN PART WITHOUT PRIOR WRITTEN PERMISSION.	
ANGEL	±1°	A4	SHEET: 1 of 1	
0-6	±0.05		PART NO. BP31011	
6-30	±0.10	DRAW	FILE NAME BP310XX	
30-150	±0.15	CHECK	TITLE Pogo pin connector	
GENERAL TOLERANCE UNLESS OTHERWISE NOTED		APPRO		

CFE 东莞市川富电子有限公司
CFE CORPORATION CO.,LTD.

ECN(DCN) NO.	A0	2014.11.26	NEW
REV	DATE	DESCRIPTION	