

Note:
 Materials:
 .Insulator: Black high temperature plastics UL94 V-0
 .Plunger: Brass 0.125um Au over Ni.
 .Spring: SUS surface treatment
 .Barrel: Brass 0.125um Au over Ni.

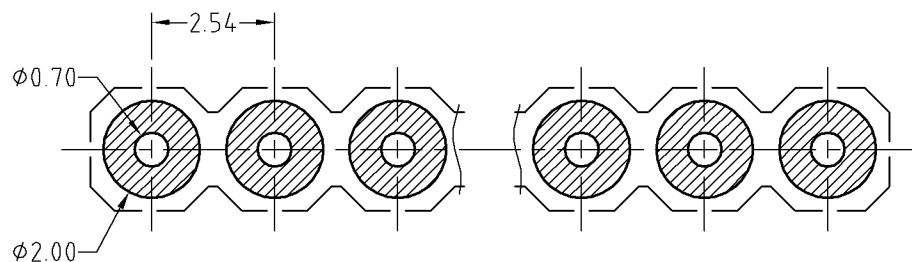
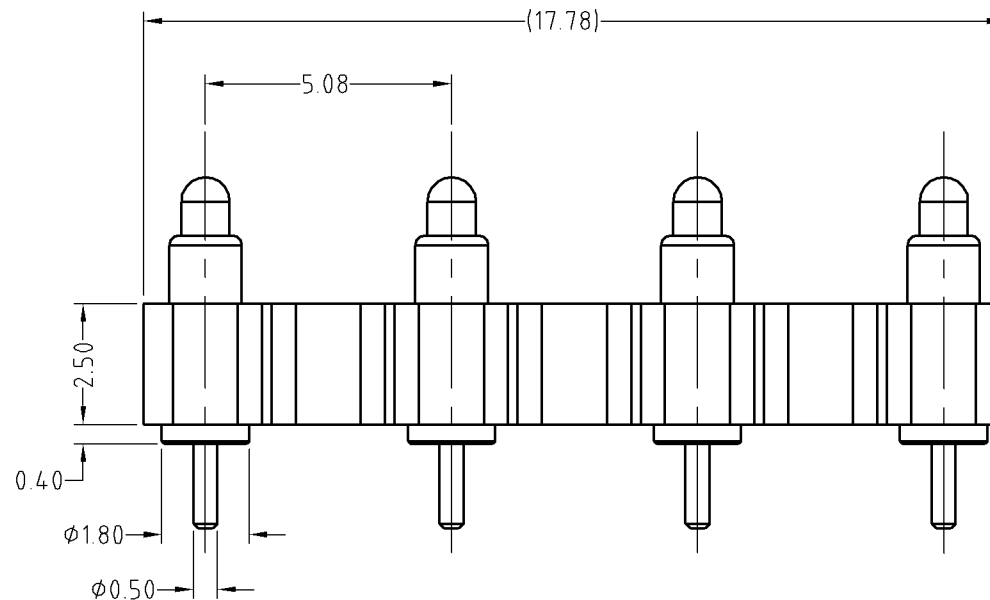
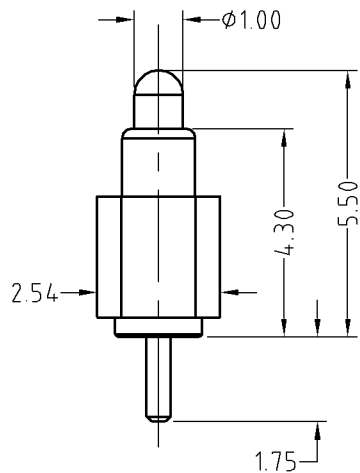
A Mechanical:
 .Contact force: 70g±20g at 1.0mm working stroke
 .Full stroke: 1.4mm
 .Life test: 20,000 cycles

Electrical:
 .Rated current & voltage: DC12V; 3A Max.
 .Contact resistance: 50 milliohm Max.

Standard tolerances are:
 .Diameters: +/-0.05mm
 .Lengths: +/-0.15mm
 .Angles: +/-2°



Approve Sign



Recommended pcb layout
 Layout tolerance: ±0.05mm

SCALE	10:1	UNIT:mm	THIS DOCUMENT IS THE SOLE PROPERTY OF CFE CORPORATION CO.,LTD., AND SHOULD NOT BE USED IN WHOLE OR IN PART WITHOUT PRIOR WRITTEN PERMISSION.	
ANGEL	±1°	A4	SHEET: 1 of 1	
0-6	±0.05			
6-30	±0.10	DRAW	PART NO.	BP31311-04508A0A
30-150	±0.15	CHECK	FILE NAME	BP313XX
GENERAL TOLERANCE UNLESS OTHERWISE NOTED	APPRO		TITLE	Pogo pin connector



ECN(DCN) NO.	REV	DATE	DESCRIPTION
	A0	2014.12.03	NEW