

Note:

Materials:

.Plunger: Brass 0.5um Au over Ni

.Barrel: Brass 0.5um Au over Ni

.Spring: SUS 0.25um Au

.Insulating bead

Mechanical:

.Contact force: 120g±20% at 1.2mm working stroke

.Full stroke: 2.2mm

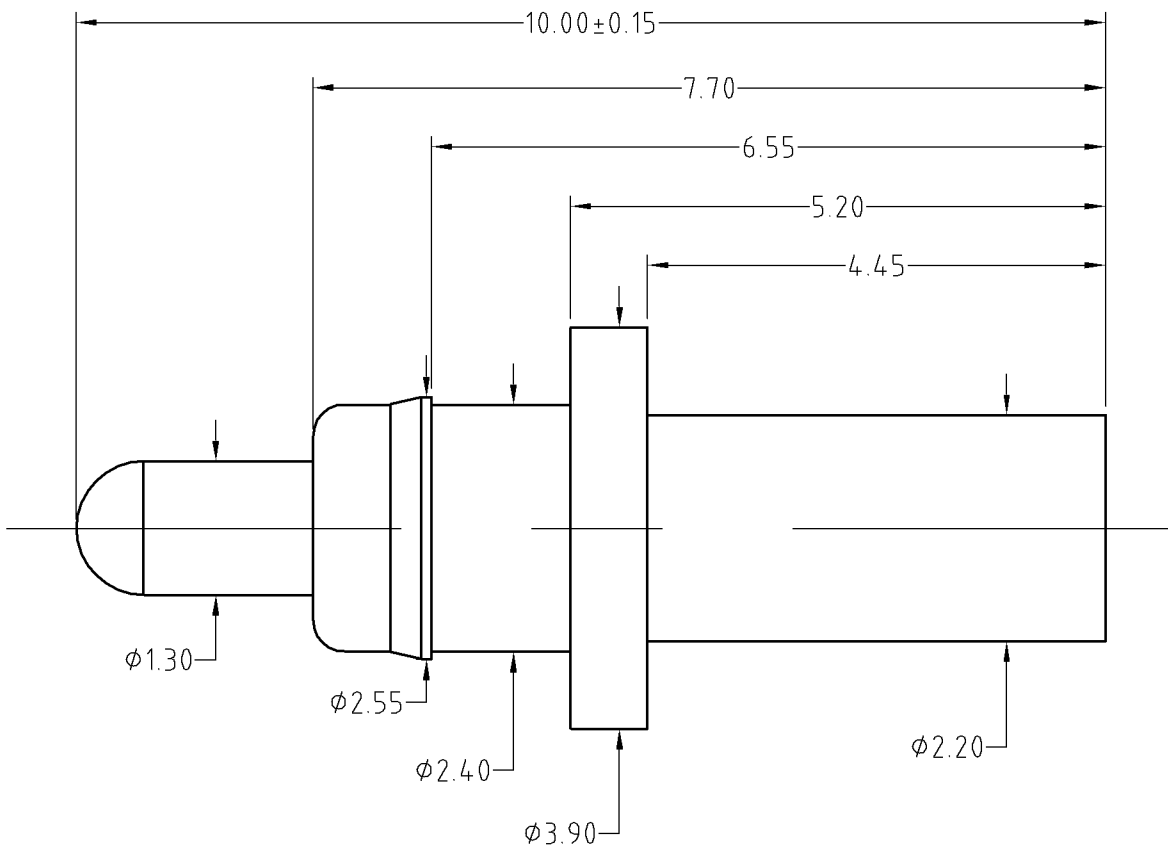
.Life test: 20,000 cycles

Electrical:


.Rated current & voltage: DC 12V, 5A

.Contact resistance: 50 milliohm Max.

To ensure the best usage, please operate it based on the working height.
Based on the engineering drawings, shall not exceed the maximum allowed compression.



Approve Sign

SCALE	10:1	UNIT:mm	THIS DOCUMENT IS THE SOLE PROPERTY OF CFE CORPORATION CO.,LTD., AND SHOULD NOT BE USED IN WHOLE OR IN PART WITHOUT PRIOR WRITTEN PERMISSION.	 东莞市川富电子有限公司 CFE CORPORATION CO.,LTD.	
ANGEL	±1°	A4			
0-6	±0.10		SHEET: 1 of 1		
6-30	±0.15	DRAW			PART NO. BP32611
30-150	±0.20	CHECK			FILE NAME BP326XX
GENERAL TOLERANCE UNLESS OTHERWISE NOTED		APPRO			TITLE. Pogo pin connector

	D0	2014.12.15	NEW
ECN(DCN) NO.	REV	DATE	DESCRIPTION