

1

2

3

4

Note:

Materials:

.Plunger: Brass 0.375um Au 1.5um over Ni

.Barrel: Brass 0.375um Au 1.5um over Ni

.Spring: SUS surface treatment

Mechanical:

.Contact force: 35g±10g at 0.4mm working stroke

.Life test: 2,000 cycles min

Electrical:

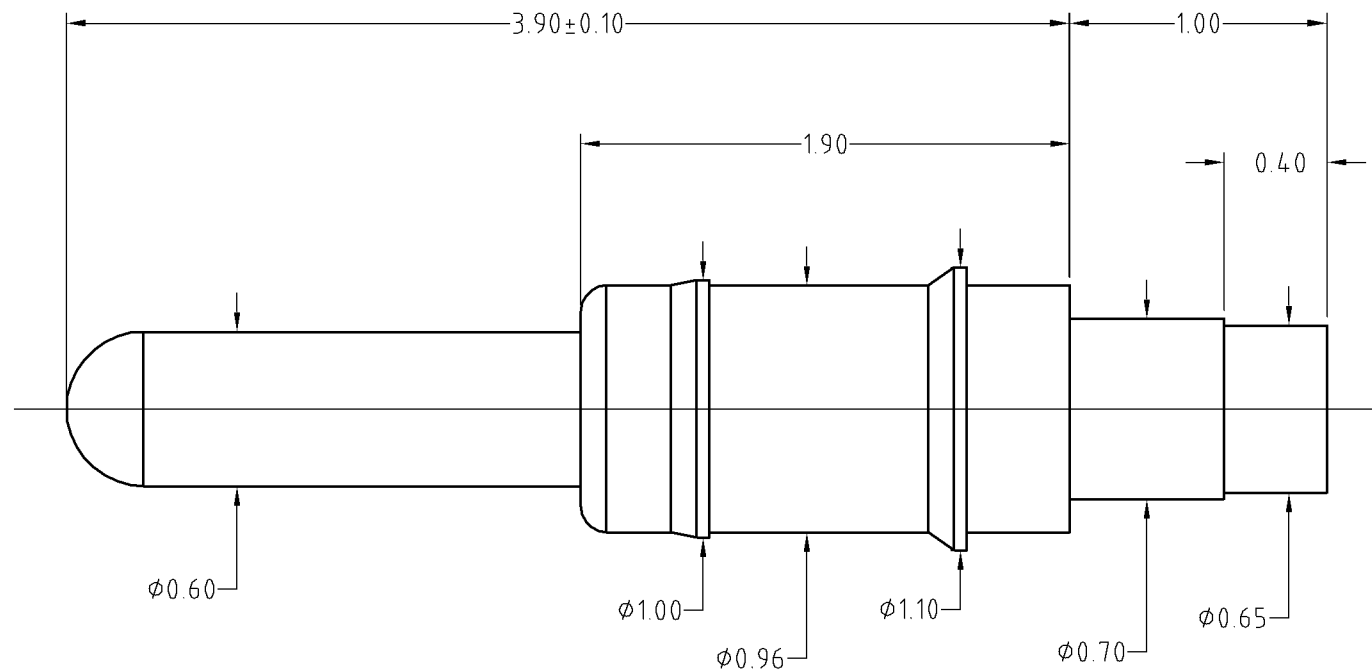
.Rated current &amp; voltage: DC 5V; 0.1A

To ensure the best usage, please operate it based on the working height.

Based on the engineering drawings, shall not exceed the maximum allowed compression.



Approve Sign



|  |       |         |  |                    |
|--|-------|---------|--|--------------------|
| SCALE                                    | 10:1  | UNIT:mm | THIS DOCUMENT IS THE SOLE PROPERTY OF CFE CORPORATION CO.,LTD., AND SHOULD NOT BE USED IN WHOLE OR IN PART WITHOUT PRIOR WRITTEN PERMISSION. |                    |
| ANGEL                                    | ±1°   | A4      | SHEET: 1 of 1  |                    |
| 0-6                                      | ±0.10 |         |  |                    |
| 6-30                                     | ±0.15 | DRAW    | PART NO.   | BP33111            |
| 30-150                                   | ±0.20 | CHECK   | FILE NAME  | BP331XX            |
| GENERAL TOLERANCE UNLESS OTHERWISE NOTED | APPRO |         | TITLE  | Pogo pin connector |

**CFE** 东莞市川富电子有限公司  
CFE CORPORATION CO.,LTD.

|              |      |             |     |
|--------------|------|-------------|-----|
| ECN(DCN) NO. | D0   | 2014.12.22  | NEW |
| REV          | DATE | DESCRIPTION |     |