

1

2

3

4

Note:

Materials:

.Plunger: Brass 0.5um Au over Ni

.Barrel: Brass 0.5um Au over Ni

.Spring: SUS surface treatment

Mechanical:

.Contact force: 70g±20% at 2.3mm working stroke

.Full stroke: 2.5mm

.Life test: 20,000 cycles

Electrical:

.Rated current & voltage: DC 12V; 1A

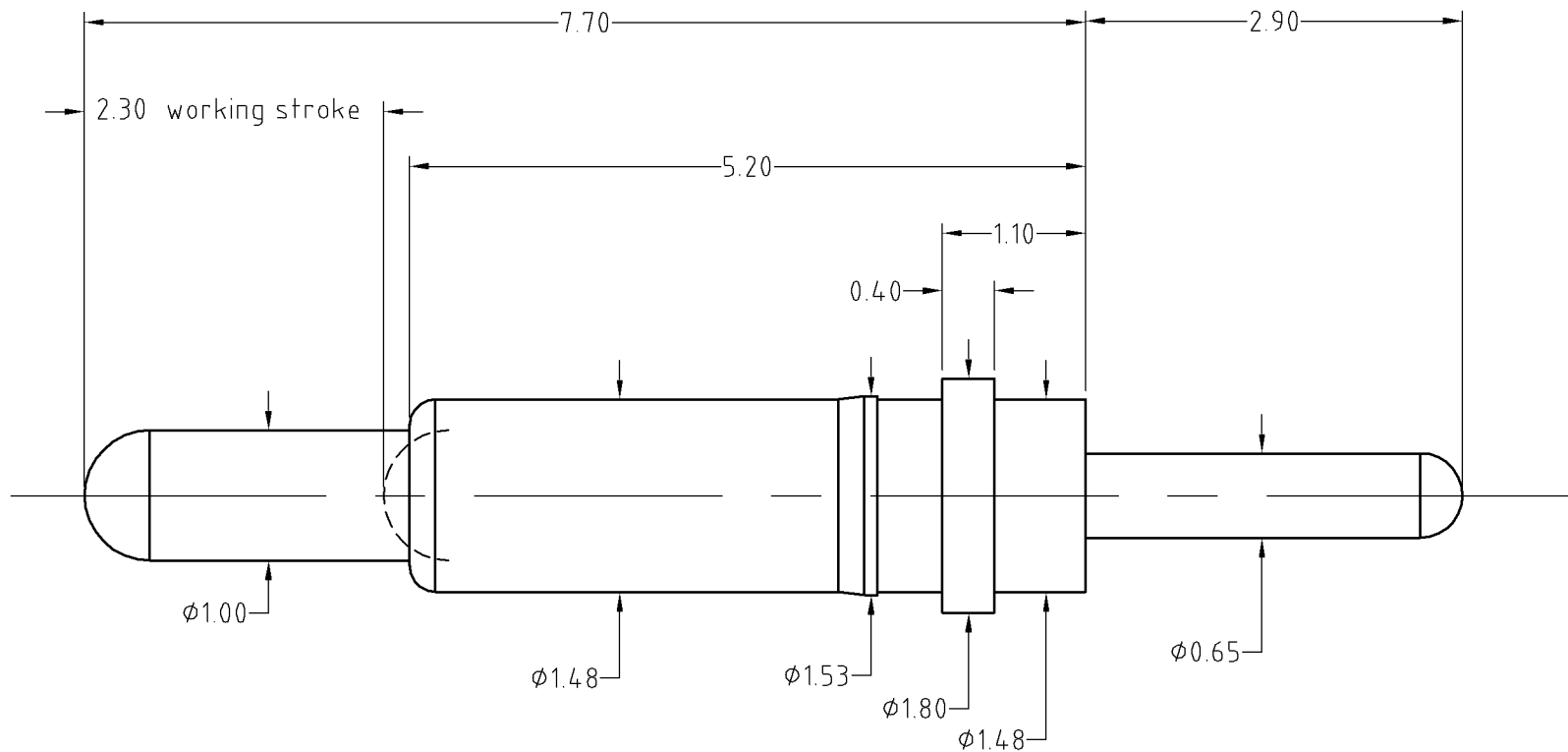
.Contact resistance: 50 milliohm Max.

To ensure the best usage, please operate it based on the working height.

Based on the engineering drawings, shall not exceed the maximum allowed compression.



Approve Sign



BOM		
Part	NO.	Qty
Plunger	B335-P1020	1
Barrel	B335-B1020	1
Spring	B335-S1001	1

SCALE	10:1	UNIT:mm	THIS DOCUMENT IS THE SOLE PROPERTY OF CFE CORPORATION CO.,LTD., AND SHOULD NOT BE USED IN WHOLE OR IN PART WITHOUT PRIOR WRITTEN PERMISSION.	东莞市川富电子有限公司 CFE CORPORATION CO.,LTD.	
ANGEL	±1°	A4			
0-6	±0.05		SHEET: 1 of 1	PART NO.	BP33511
6-30	±0.10	DRAW		FILE NAME	BP335XX
30-150	±0.15	CHECK		TITLE	Pagoda pin connector
GENERAL TOLERANCE UNLESS OTHERWISE NOTED		APPRO			

ECN(DCN) NO.	REV	DATE	DESCRIPTION
	A0	2015.03.24	NEW