

Note:

Materials:

.Plunger: Brass 0.25um Au over Ni

.Barrel: Brass 0.25um Au over Ni

.Spring: SUS surface treatment

Mechanical:

.Contact force: 100g±20% at 7.55mm Working Height

.Max Working Height:7.55mm

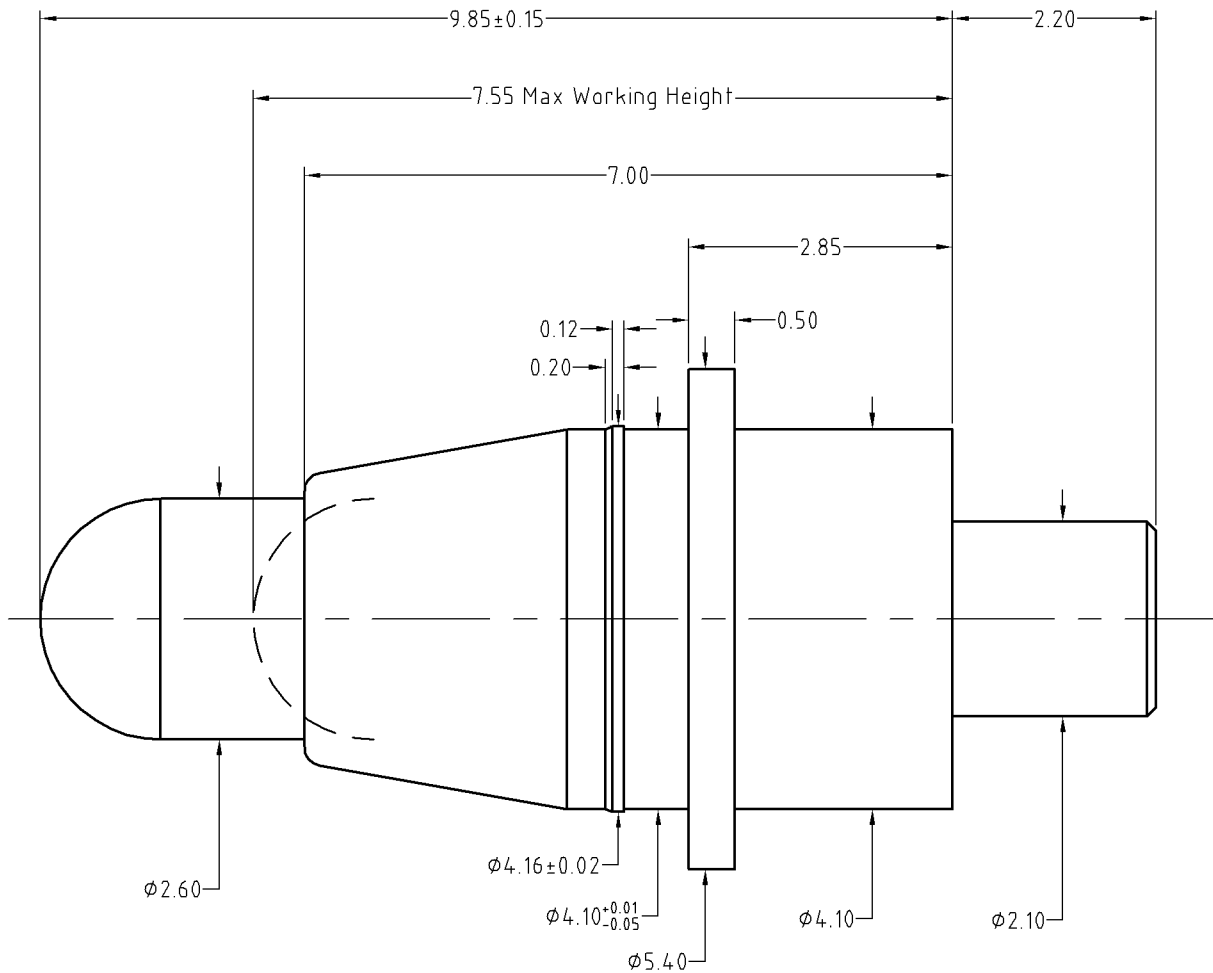
.Life test: 10,000 cycles

Electrical:

.Rated current & voltage: DC 5V; 3A Max


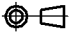
.Contact resistance: 50 milliohm Max.

To ensure the best usage, please operate it based on the working height.
Based on the engineering drawings, shall not exceed the maximum allowed compression.



Approve Sign

Approve Sign

SCALE	10:1	UNIT:mm	THIS DOCUMENT IS THE SOLE PROPERTY OF CFE CORPORATION CO.,LTD., AND SHOULD NOT BE USED IN WHOLE OR IN PART WITHOUT PRIOR WRITTEN PERMISSION.	 东莞市川富电子有限公司 CFE CORPORATION CO.,LTD.			
ANGEL	±1°	A4					
0~6	±0.10					SHEET: 1 of 1	
6~30	±0.15	DRAW				PART NO.	BP35111
30~150	±0.20	CHECK				FILE NAME	BP351XX
GENERAL TOLERANCE UNLESS OTHERWISE NOTED		APPRO		TITLE.	Pogo pin connector		

_____	A0	2015.02.10	NEW
ECN(DCN) NO.	REV	DATE	DESCRIPTION