

1

2

3

4

Note:

Materials:

.Plunger: Brass 0.25um Au over Ni

.Barrel: Brass 0.125um Au over Ni

.Spring: SUS surface treatment

Mechanical:

.Contact force: 60g±20% at 1.5mm working stroke

.Full stroke: 1.80mm

.Life test: 20,000 cycles

Electrical:

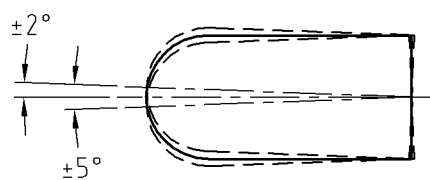
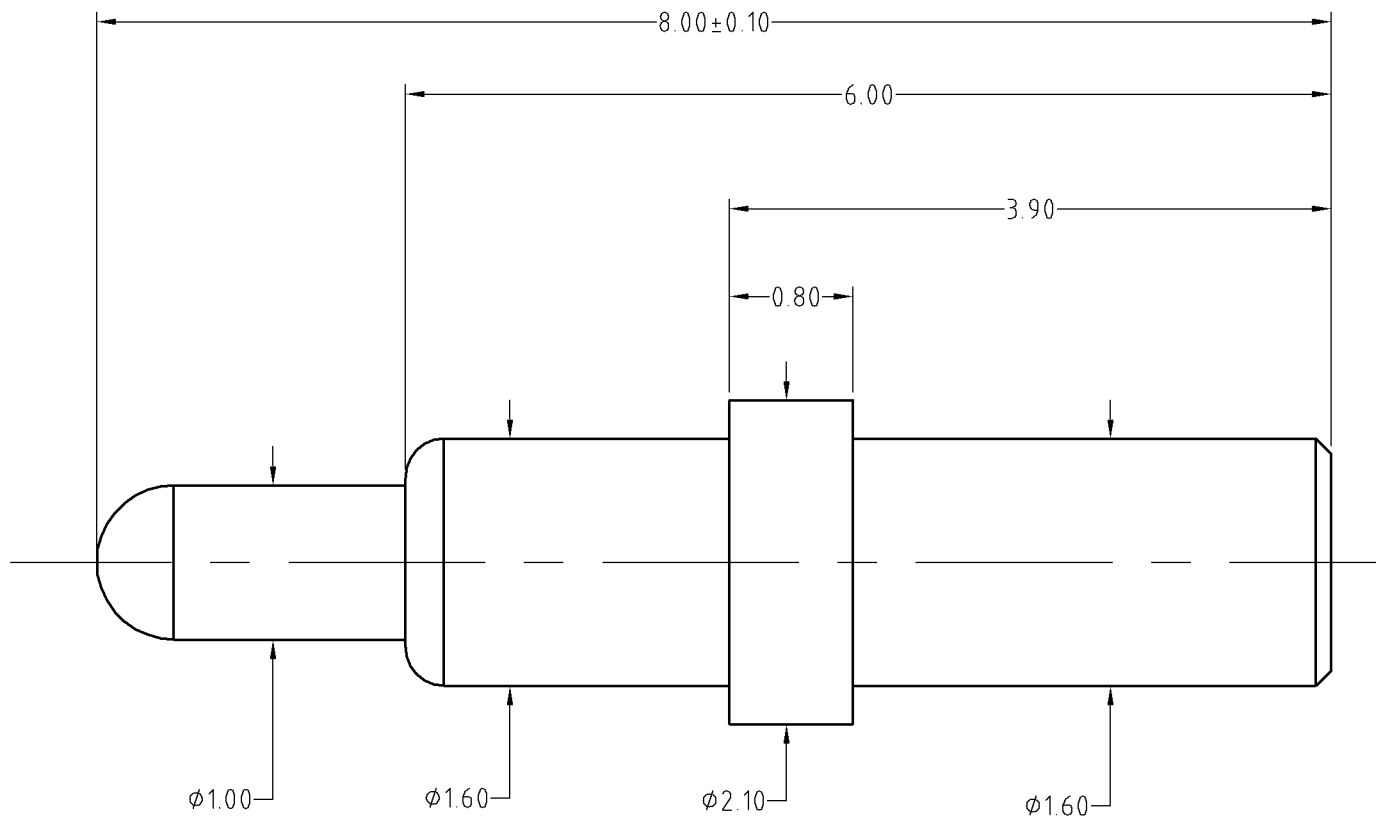
.Rated current & voltage: DC 12V, 2A

.Contact resistance: 50 milliohm Max.

To ensure the best usage, please operate it based on the working height.
Based on the engineering drawings, shall not exceed the maximum allowed compression.



Approve Sign



模拟极限偏摆角度

SCALE	10:1	UNIT:mm	THIS DOCUMENT IS THE SOLE PROPERTY OF CFE CORPORATION CO.,LTD., AND SHOULD NOT BE USED IN WHOLE OR IN PART WITHOUT PRIOR WRITTEN PERMISSION.	CFE 东莞市川富电子有限公司 CFE CORPORATION CO.,LTD.	
ANGEL	±1°	A4			
0-6	±0.10		SHEET: 1 of 1		
6-30	±0.15	DRAW	PART NO.	BP35211	
30-150	±0.20	CHECK	FILE NAME	BP352XX	
GENERAL TOLERANCE UNLESS OTHERWISE NOTED		APPRO	TITLE	Pogo pin connector	

ECN(DCN) NO.	D0	2015.01.09	NEW
REV	DATE	DESCRIPTION	