

Note:

Materials:

.Insulator: Black high temperature plastics UL94 V-0

.Plunger: Brass 0.25um Au over Ni

.Barrel: Brass 0.25um Au over Ni

.Spring: SUS surface treatment

To ensure the best usage, please operate it based on the working height.

Based on the engineering drawings, shall not exceed the maximum allowed compression.

Mechanical:

.Contact force: 70g±20g at 1.4mm working stroke

.Full stroke: 1.40mm

.Life test: 20,000 cycles

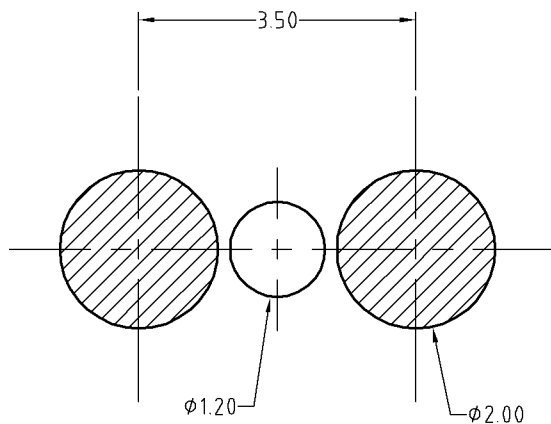
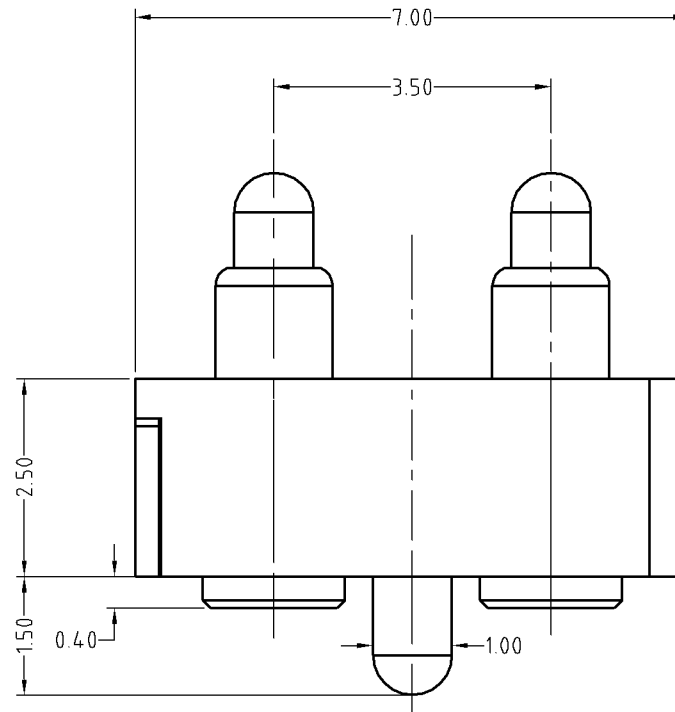
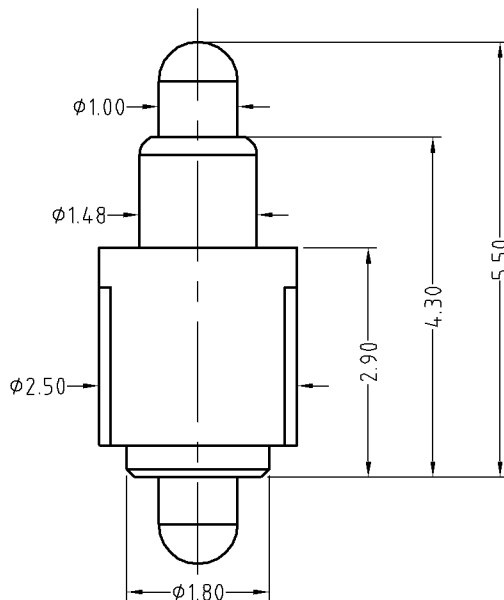
Electrical:

.Rated current & voltage: DC 12V; 2A

.Contact resistance: 50 milliohm Max.



Approve Sign



Recommended pcb layout  
Layout tolerance: ±0.05mm

SCALE	10:1	UNIT:mm	THIS DOCUMENT IS THE SOLE PROPERTY OF CFE CORPORATION CO.,LTD., AND SHOULD NOT BE USED IN WHOLE OR IN PART WITHOUT PRIOR WRITTEN PERMISSION.	东莞市川富电子有限公司 CFE CORPORATION CO.,LTD.	
ANGEL	±1°	A4			
0~6	±0.10		SHEET: 1 of 1	PART NO.	BP35511-02350H0A
6~30	±0.15	DRAW		FILE NAME	BP355XX
30~150	±0.20	CHECK		TITLE	Pogo pin connector
GENERAL TOLERANCE UNLESS OTHERWISE NOTED		APPRO			

ECN(DCN) NO.	REV	DATE	DESCRIPTION
	D0	2013.05.30	NEW