

Note:

Materials:

.Plunger: Brass 0.125um Au over Ni

.Barrel: Brass 0.125um Au over Ni

.Spring: SUS surface treatment

Mechanical:

.Contact force: 100g±20% at 1.0mm working stroke

.Full stroke: 1.3mm

.Life test: 20,000 cycles

Electrical:

.Rated current & voltage: DC 12V, 1A

.Contact resistance: 50 milliohm Max.

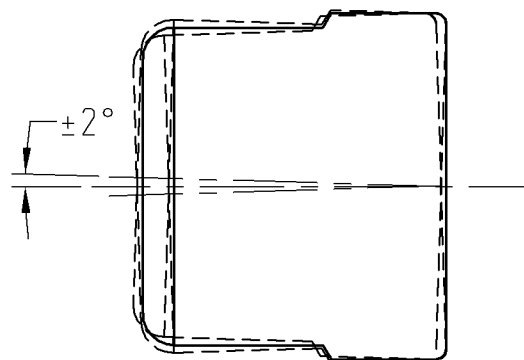
Cannot be used as the charging,

To ensure the best usage, please operate it based on the working height.  
Based on the engineering drawings, shall not exceed the maximum allowed compression.

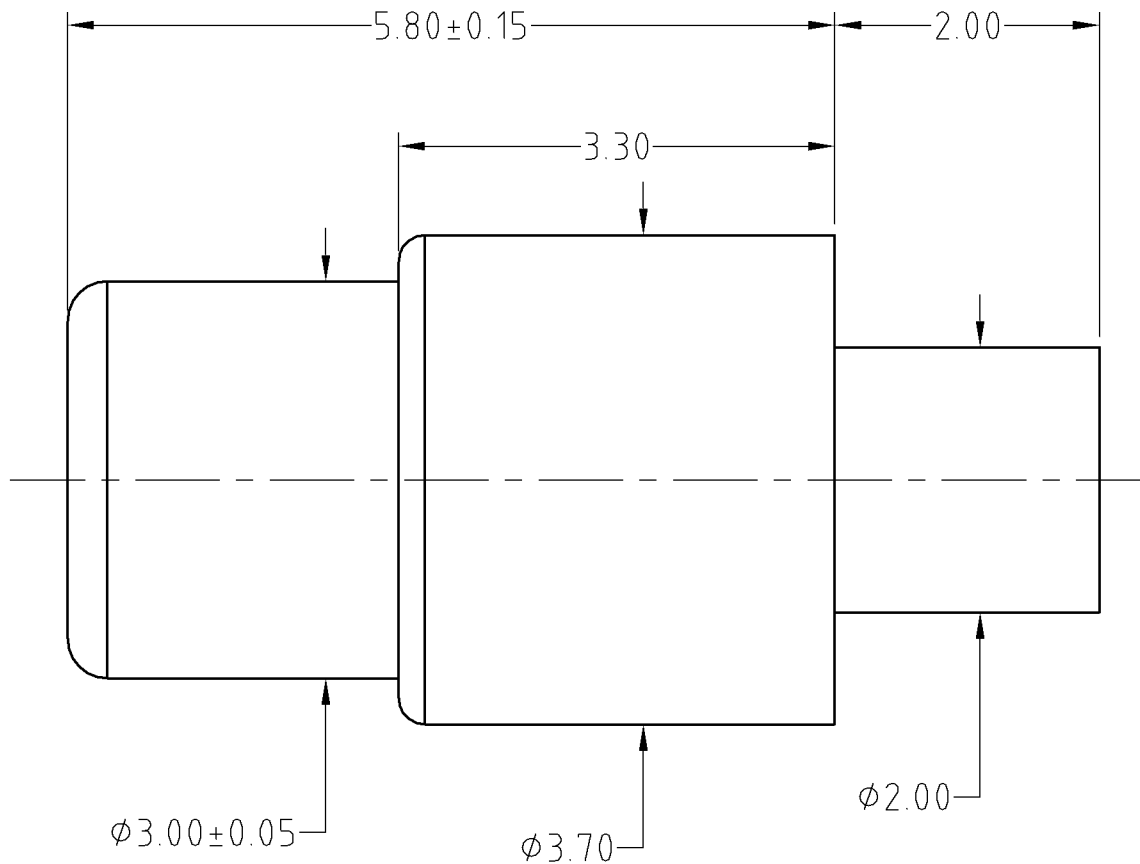


Approve Sign

| BOM     |            |     |
|---------|------------|-----|
| Part    | NO.        | Qty |
| Plunger | B357-B1005 | 1   |
| Barrel  | B357-P1005 | 1   |
| Spring  | B357-S1001 | 1   |



模拟极限偏摆角度



|  |       |         |  |  |                    |
|--|-------|---------|--|--|--------------------|
| SCALE                                    | 10:1  | UNIT:mm | THIS DOCUMENT IS THE SOLE PROPERTY OF CFE CORPORATION CO.,LTD., AND SHOULD NOT BE USED IN WHOLE OR IN PART WITHOUT PRIOR WRITTEN PERMISSION. | <b>CFE</b> 东莞市川富电子有限公司<br>CFE CORPORATION CO.,LTD. |                    |
| ANGEL                                    | ±1°   | A4      |  |  |                    |
| 0-6                                      | ±0.10 |         | SHEET: 1 of 1  | PART NO.   | BP35711            |
| 6-30                                     | ±0.15 | DRAW    |  | FILE NAME  | BP357XX            |
| 30-150                                   | ±0.20 | CHECK   |  | TITLE  | Pogo pin connector |
| GENERAL TOLERANCE UNLESS OTHERWISE NOTED |       | APPRO   |  |  |                    |

|              |      |             |     |
|--------------|------|-------------|-----|
| ECN(DCN) NO. | A0   | 2015.05.26  | NEW |
| REV          | DATE | DESCRIPTION |     |