

1

2

3

4

Note:

Materials:

- .Plunger: Brass 0.25um Au over Ni
- .Barrel: Brass 0.125um Au over Ni
- .Spring: SUS surface treatment

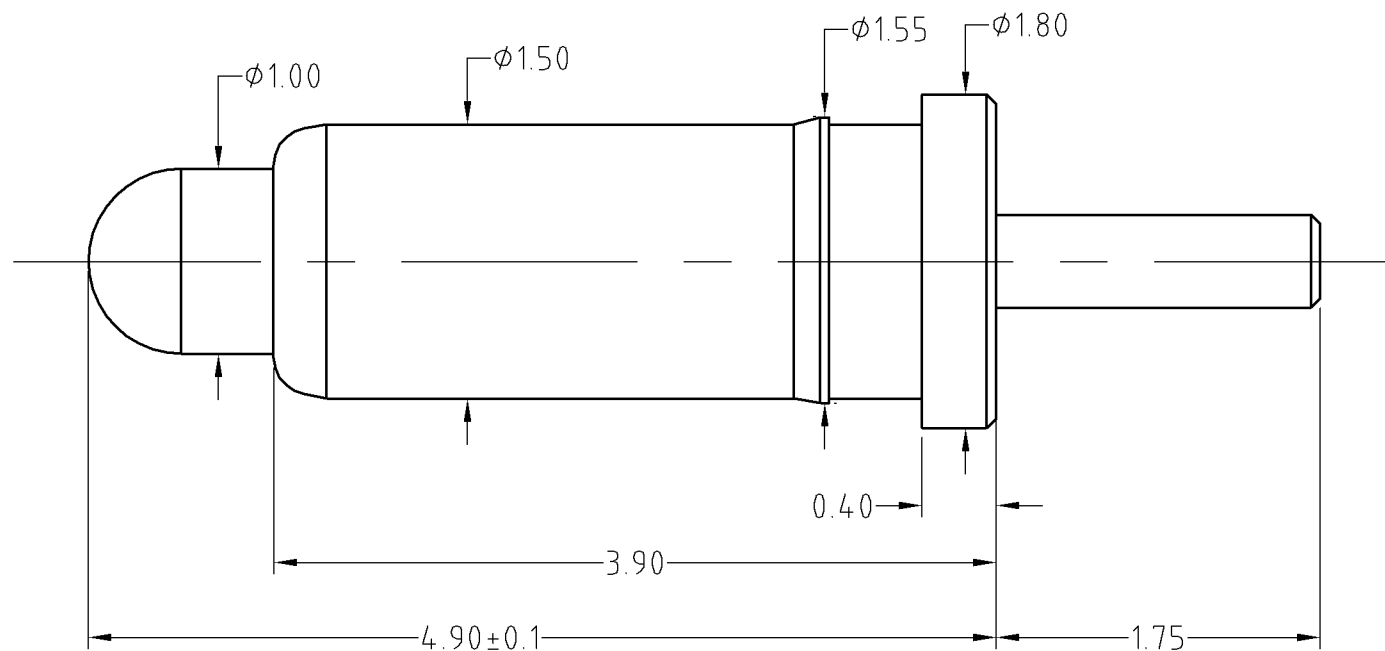
To ensure the best usage, please operate it based on the working height.  
Based on the engineering drawings, shall not exceed the maximum allowed compression.

Mechanical:

.Contact force: 70g±20% at 1.0mm working stroke  
.Full stroke:1.0mm  
.Life test: 20,000 cycles

Electrical:

.Rated current & voltage: DC 12V; 1A  
.Contact resistance: 50 milliohm Max.



## BOM

Part	NO.	Qty
Plunger	B359-P1010	1
Barrel	B359-B1005	1
Spring	B359-S1001	1

SCALE	10:1	UNIT:mm	THIS DOCUMENT IS THE SOLE PROPERTY OF CFE CORPORATION CO.,LTD., AND SHOULD NOT BE USED IN WHOLE OR IN PART WITHOUT PRIOR WRITTEN PERMISSION.	东莞市川富电子有限公司 CFE CORPORATION CO.,LTD.
ANGEL	$\pm 1^\circ$	A4		
0-6	$\pm 0.10$		SHEET: 1 of 1	
6-30	$\pm 0.15$	DRAW		PART NO. BP35911
30-150	$\pm 0.20$	CHECK		FILE NAME BP359XX
GENERAL TOLERANCE UNLESS OTHERWISE NOTED		APPRO		TITLE. Pogo pin connector

ECN(DCN) NO.	REV	DATE	DESCRIPTION
	D0	2013.05.30	NEW