

1

2

3

4

Note:

Materials:

.Plunger: Brass 0.125um Au over Ni

.Barrel: Brass 0.125um Au over Ni

.Spring: SUS surface treatment

Mechanical:

.Contact force: 180g±20% at 3.0mm working stroke

.Full stroke: 5.0mm

.Life test: 20,000 cycles

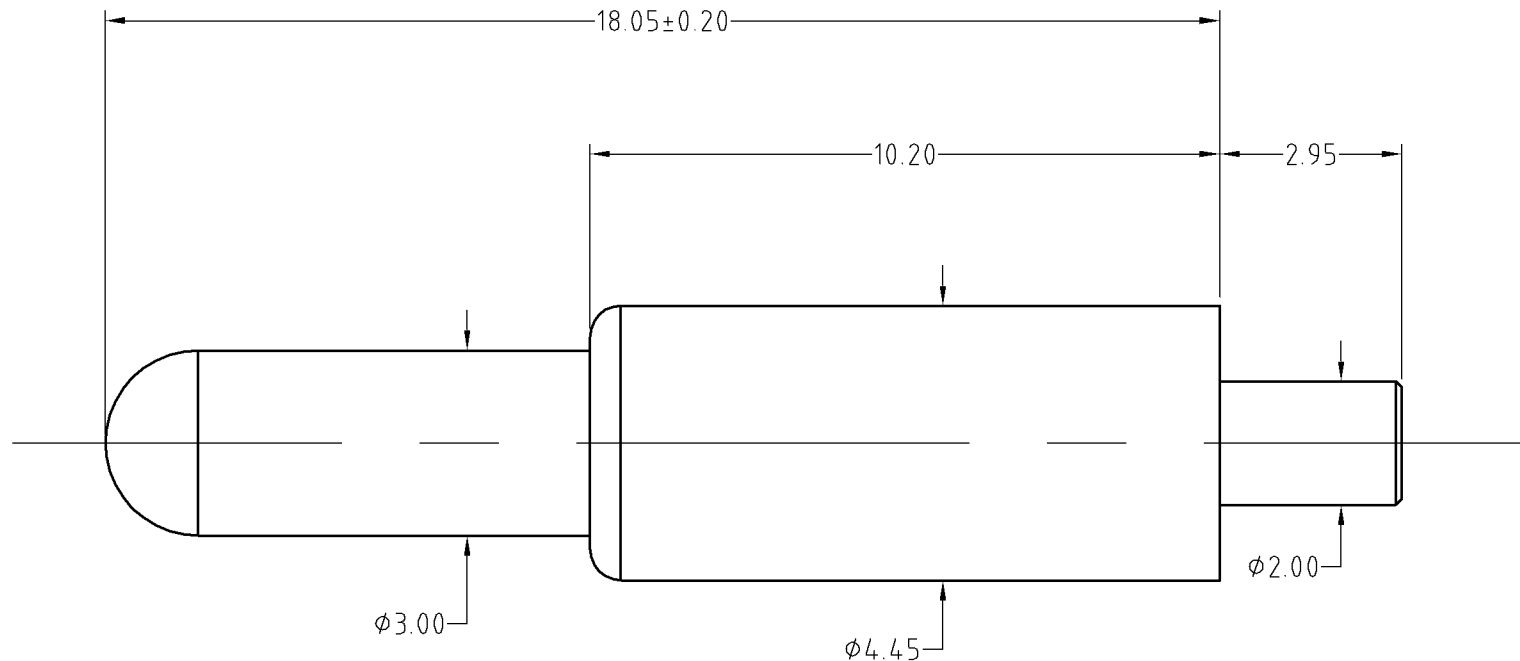
Electrical:

.Rated current & voltage: DC 12V, 0.5A

.Contact resistance: 50 milliohm Max.

Cannot be used as the charging,

To ensure the best usage, please operate it based on the working height.
Based on the engineering drawings, shall not exceed the maximum allowed compression.



BOM

Part	NO.	Qty
Plunger	B361-B1005	1
Barrel	B361-B1005	1
Spring	B361-S1001	1

SCALE	10:1	UNIT:mm	THIS DOCUMENT IS THE SOLE PROPERTY OF CFE CORPORATION CO.,LTD., AND SHOULD NOT BE USED IN WHOLE OR IN PART WITHOUT PRIOR WRITTEN PERMISSION.	CFE 东莞市川富电子有限公司 CFE CORPORATION CO.,LTD.
ANGEL	±1°	A4		
0~6	±0.10		SHEET: 1 of 1	
6~30	±0.15	DRAW		PART NO. BP36111
30~150	±0.20	CHECK		FILE NAME BP361XX
GENERAL TOLERANCE UNLESS OTHERWISE NOTED		APPRO		TITLE. Pogo pin connector

ECN(DCN) NO.	REV	DATE	DESCRIPTION
	D0	2013.05.30	NEW