

1

2

3

4

Note:

Materials:

.Plunger: Brass 1.0um Au over Ni

.Barrel: Brass 1.0um Au over Ni

.Spring: SUS surface treatment

Mechanical:

.Contact force: 70g±20g at 0.6mm working stroke

.Life test: 50,000 cycles

Electrical:

.Rated current & voltage: DC 12V; 1A

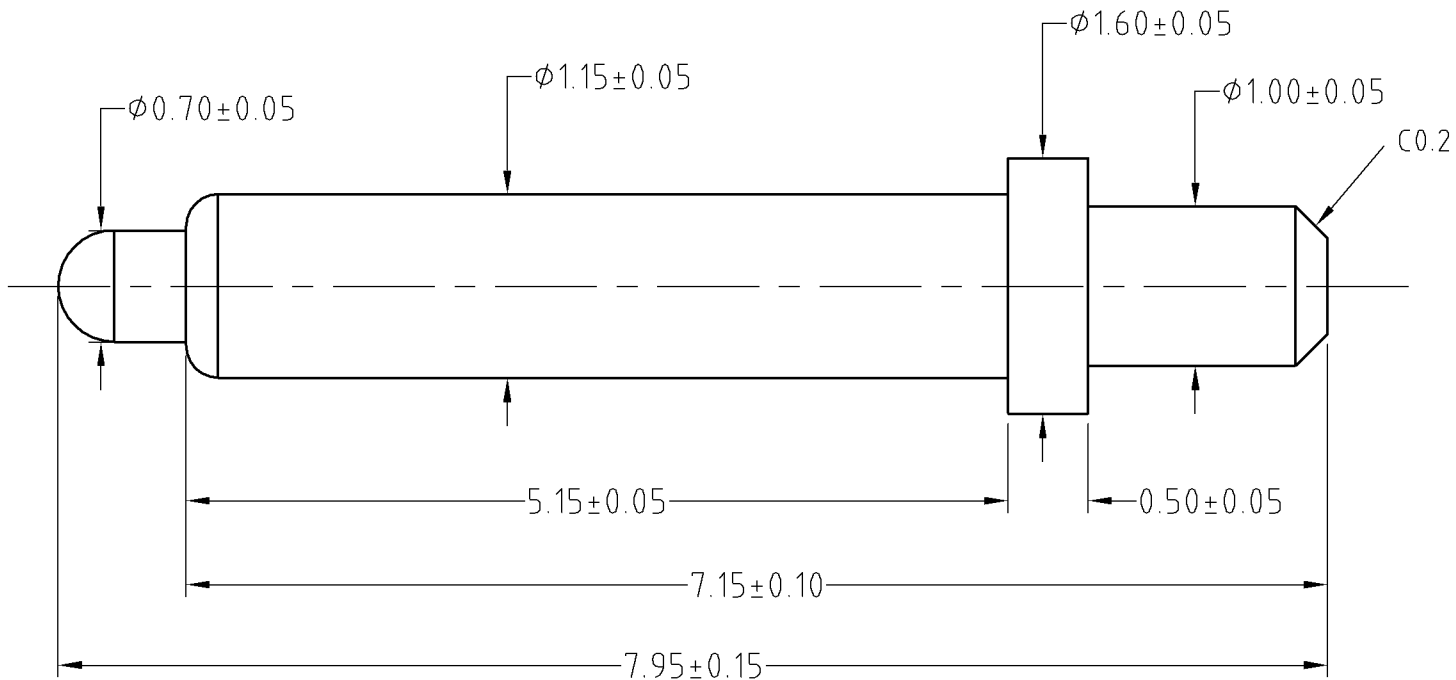
.Contact resistance: 50 milliohm Max.

To ensure the best usage, please operate it based on the working height.

Based on the engineering drawings, shall not exceed the maximum allowed compression.



Approve Sign



| | | | | | |
|--|-------|---------|--|---|--|
| SCALE | 10:1 | UNIT:mm | THIS DOCUMENT IS THE SOLE PROPERTY OF CFE CORPORATION CO.,LTD., AND SHOULD NOT BE USED IN WHOLE OR IN PART WITHOUT PRIOR WRITTEN PERMISSION. | 东莞市川富电子有限公司 CFE CORPORATION CO.,LTD. | |
| ANGEL | ±1° | A4 | | | |
| 0-6 | ±0.10 | | SHEET: 1 of 1 | | |
| 6-30 | ±0.15 | DRAW | PART NO. | BP37011 | |
| 30-150 | ±0.20 | CHECK | FILE NAME | BP370XX | |
| GENERAL TOLERANCE UNLESS OTHERWISE NOTED | | APPRO | TITLE | Pago pin connector | |

| | | | |
|--------------|------|-------------|-----|
| ECN(DCN) NO. | D0 | 2015.01.28 | NEW |
| REV | DATE | DESCRIPTION | |