

Note:

Materials:

.Plunger: Brass 0.025um Au over Ni

.Barrel: Brass 0.025um Au over Ni

.Spring: SUS

Mechanical:

.Contact force: 80g±20g at 1.7mm working stroke

.Full stroke: 1.8mm

.Life test: 10,000 cycles

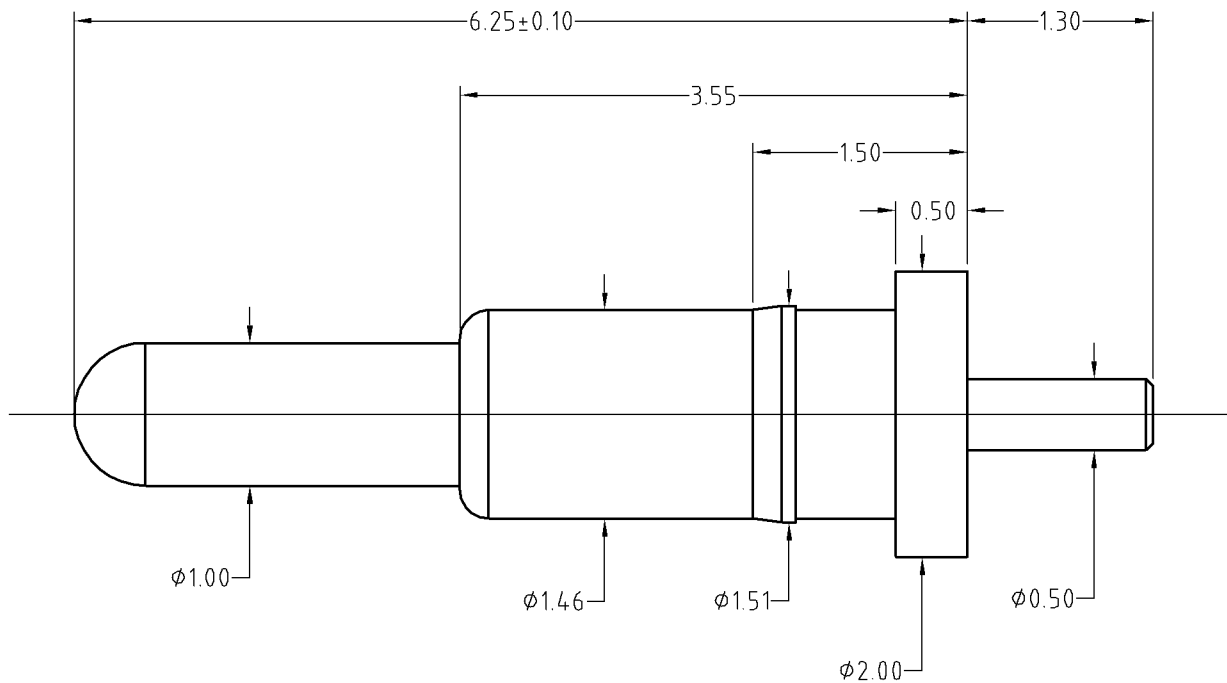
Electrical:

.Rated current & voltage: DC 12V, 0.5A

.Contact resistance: 50 milliohm Max.

To ensure the best usage, please operate it based on the working height.

Based on the engineering drawings, shall not exceed the maximum allowed compression.



SCALE	10:1	UNIT:mm	THIS DOCUMENT IS THE SOLE PROPERTY OF CFE CORPORATION CO.,LTD., AND SHOULD NOT BE USED IN WHOLE OR IN PART WITHOUT PRIOR WRITTEN PERMISSION.	CFE 东莞市川富电子有限公司 CFE CORPORATION CO.,LTD.
ANGEL	±1°	A4		
0-6	±0.10		SHEET: 1 of 1	
6-30	±0.15	DRAW	PART NO.	BP37711
30-150	±0.20	CHECK	FILE NAME	BP377XX
GENERAL TOLERANCE UNLESS OTHERWISE NOTED		APPRO	TITLE	Pogo pin connector

ECN(DCN) NO.	D0	2015.02.11	NEW
REV	DATE	DESCRIPTION	