

Note:

Materials:

.Plunger: Brass 0.75um Au over Ni

.Barrel: Brass 0.5um Au over Ni

.Spring: SUS surface treatment

Mechanical:

.Contact force: 200g±20% at 2.10mm working stroke

.Full stroke: 2.5mm

.Life test: 20,000 cycles

Electrical:

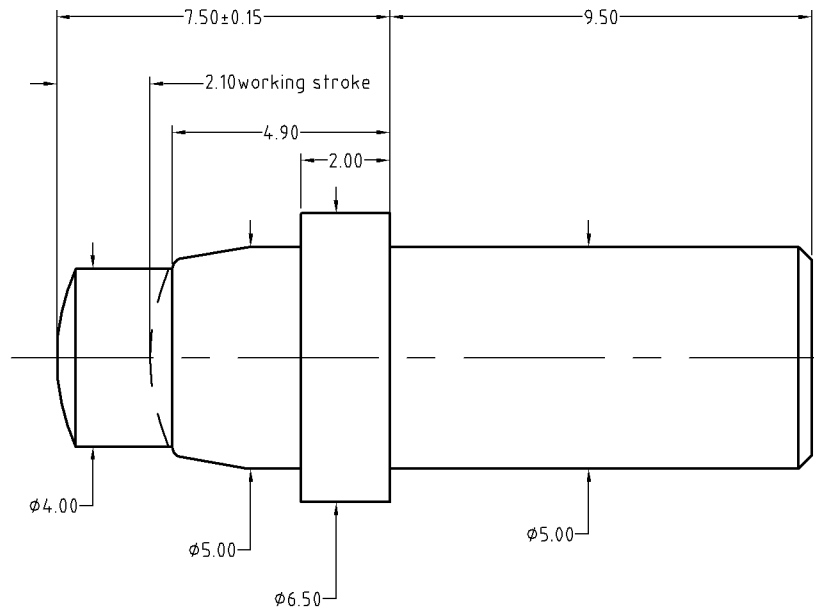
.Rated current & voltage: DC 12V; 30A

.Contact resistance: 50 milliohm Max.

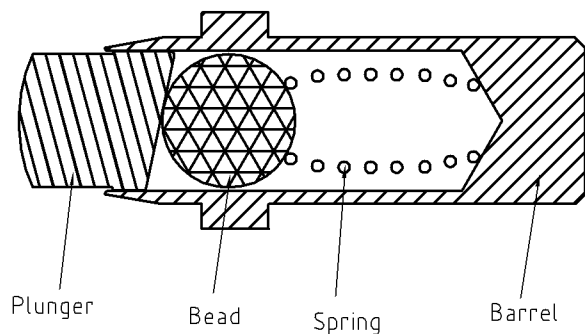
To ensure the best usage, please operate it based on the working height.
Based on the engineering drawings, shall not exceed the maximum allowed compression.



Approve Sign



BOM		
Part	NO.	Qty
Plunger	B381-P1030	1
Barrel	B381-B1020	1
Spring	B381-S1001	1
Bead	B381-T1000	1



SCALE	10:1	UNIT:mm	THIS DOCUMENT IS THE SOLE PROPERTY OF CFE CORPORATION CO.,LTD., AND SHOULD NOT BE USED IN WHOLE OR IN PART WITHOUT PRIOR WRITTEN PERMISSION.	CFE 东莞市川富电子有限公司 CFE CORPORATION CO.,LTD.
ANGEL	±1°	A4		
0~6	±0.05		SHEET: 1 of 1	
6~30	±0.10	DRAW		PART NO. BP38111
30~150	±0.15	CHECK		FILE NAME BP381XX
GENERAL TOLERANCE UNLESS OTHERWISE NOTED		APPRO		TITLE. Pogo pin connector

	D0	2016.01.08	NEW
ECN(DCN) NO.	REV	DATE	DESCRIPTION