

1

2

3

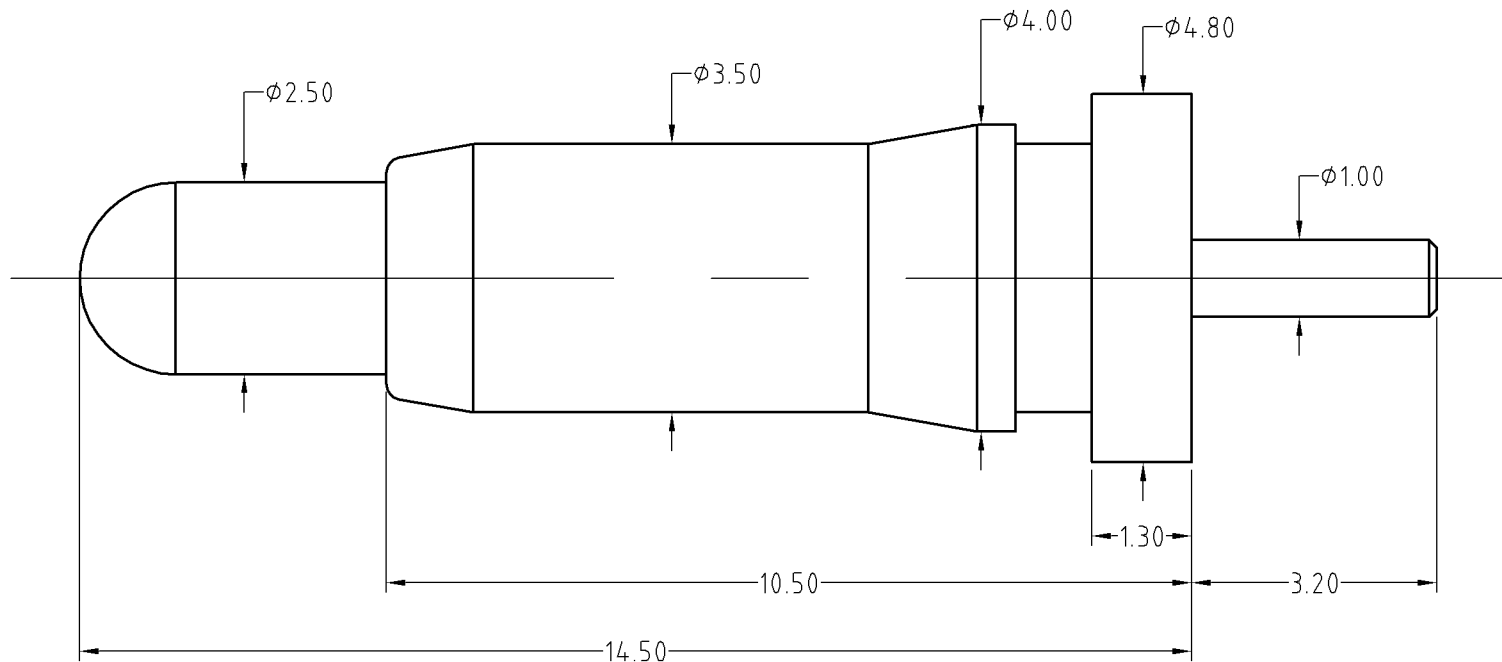
4

Note:
 Materials:
 .Plunger: Brass 0.25um Au over Ni
 .Barrel: Brass 0.25um Au over Ni
 .Spring: SUS surface treatment
 Mechanical:
 .Contact force: 200g±20% at 1.5mm working stroke
 .Full stroke: 3.0mm
 .Life test: 10,000 cycles
 Electrical:
 .Rated current & voltage: DC 12V; 9A
 .Contact resistance: 50 milliohm Max.

To ensure the best usage, please operate it based on the working height.
 Based on the engineering drawings, shall not exceed the maximum allowed compression.



Approve Sign



SCALE	10:1	UNIT:mm	THIS DOCUMENT IS THE SOLE PROPERTY OF CFE CORPORATION CO.,LTD., AND SHOULD NOT BE USED IN WHOLE OR IN PART WITHOUT PRIOR WRITTEN PERMISSION.	
ANGEL	±1°	A4	SHEET: 1 of 1	
0~6	±0.10			
6~30	±0.15	DRAW	PART NO.	BP38311
30~150	±0.20	CHECK	FILE NAME	BP383XX
GENERAL TOLERANCE UNLESS OTHERWISE NOTED		APPRO	TITLE.	Pogo pin connector



_____	D0	2015.03.09	NEW
ECN(DCN) NO.	REV	DATE	DESCRIPTION