

Note:

Materials:

- .Plunger: Brass 0.25um Au over Ni
- .Barrel: Brass 0.125um Au over Ni
- .Spring: SUS surface treatment

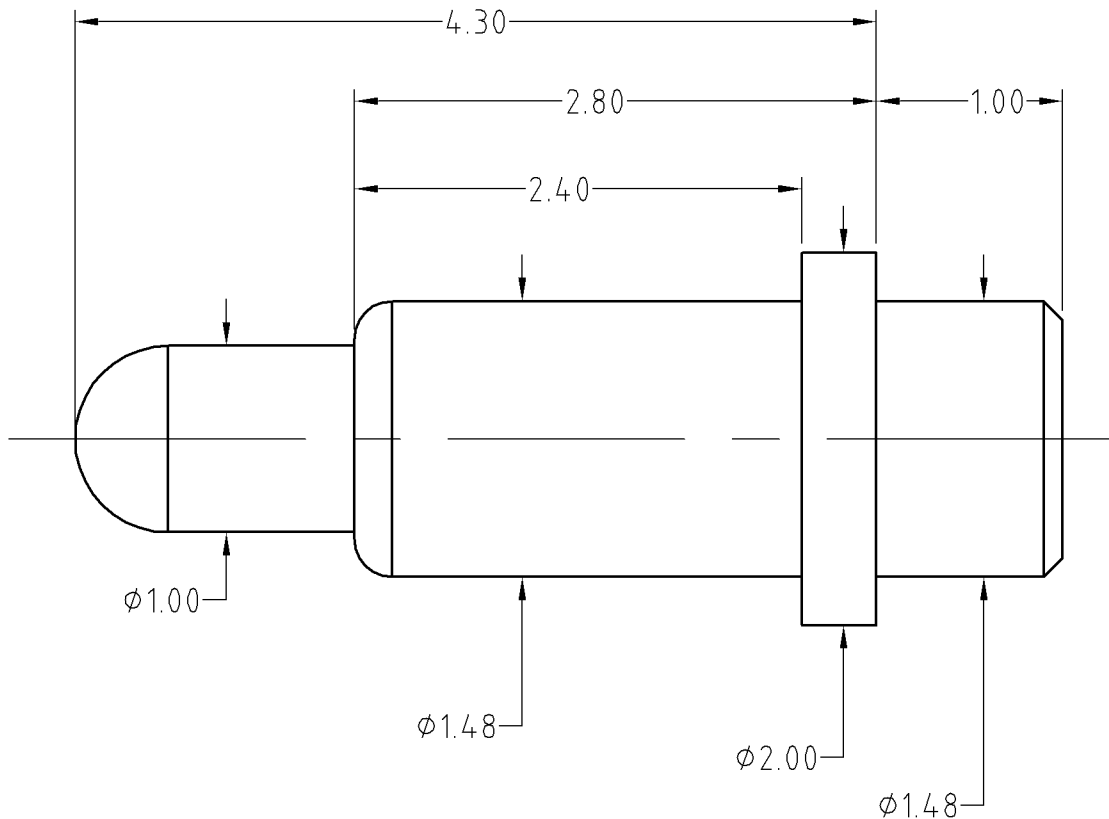
Mechanical:

- .Contact force: 70g±20g at 0.8mm working stroke
- .Full stroke: 1.0mm
- .Life test: 20,000 cycles

Electrical:

- .Rated current & voltage: DC 12V; 1A
- .Contact resistance: 50 milliohm Max.

To ensure the best usage, please operate it based on the working height.  
Based on the engineering drawings, shall not exceed the maximum allowed compression.



Approve Sign

BOM		
Part	NO.	Qty
Plunger	B388-P1010	1
Barrel	B388-B1005	1
Spring	B388-S1001	1

ECN(DCN) NO.	REV	DATE	DESCRIPTION
	D0	2013.05.30	NEW

SCALE	10:1	UNIT:mm	THIS DOCUMENT IS THE SOLE PROPERTY OF CFE CORPORATION CO.,LTD., AND SHOULD NOT BE USED IN WHOLE OR IN PART WITHOUT PRIOR WRITTEN PERMISSION.	
ANGEL	±1°	A4	SHEET: 1 of 1	
0~6	±0.10			
6~30	±0.15	DRAW	PART NO.	BP38811
30~150	±0.20	CHECK	FILE NAME	BP388XX
GENERAL TOLERANCE UNLESS OTHERWISE NOTED		APPRO	TITLE.	Pogo pin connector

