

1

2

3

4

Note:

Materials: To ensure the best usage, please operate it based on the working height.  
Based on the engineering drawings, shall not exceed the maximum allowed compression.

.Plunger: Brass 0.25um Au over Ni

.Barrel: Brass 0.25um Au over Ni

.Spring: SUS surface treatment

Mechanical:

.Contact force: 60g±15g at 0.7mm working stroke

.Full stroke: 1.0mm

.Life test: 20,000 cycles

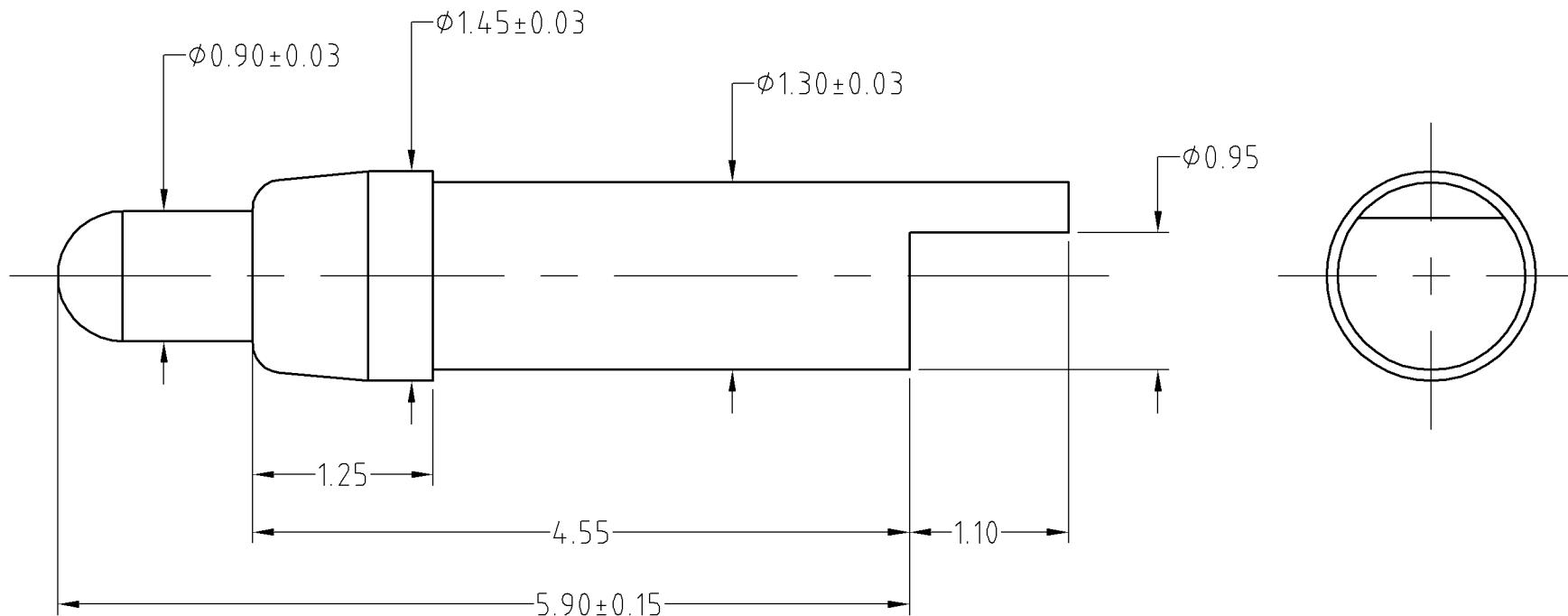
Electrical:

.Rated current &amp; voltage: DC 12V; 5A

.Contact resistance: 50 milliohm Max.



Approve Sign



SCALE	10:1	UNIT:mm	THIS DOCUMENT IS THE SOLE PROPERTY OF CFE CORPORATION CO.,LTD., AND SHOULD NOT BE USED IN WHOLE OR IN PART WITHOUT PRIOR WRITTEN PERMISSION.	
ANGEL	$\pm 1^\circ$	A4	SHEET: 1 of 1	
0~6	$\pm 0.10$			
6~30	$\pm 0.15$	DRAW	PART NO.	BP39711
30~150	$\pm 0.20$	CHECK	FILE NAME	BP397XX
GENERAL TOLERANCE UNLESS OTHERWISE NOTED		APPRO	TITLE.	Pogo pin connector

**CFE** 东莞市川富电子有限公司  
CFE CORPORATION CO.,LTD.

_____	D0	2013.05.30	NEW
ECN(DCN) NO.	REV	DATE	DESCRIPTION