

1

2

3

4

Note:

Materials:

- .Plunger: Brass 0.375um Au over Ni
- .Barrel: Brass 0.25um Au over Ni
- .Spring: SUS surface treatment

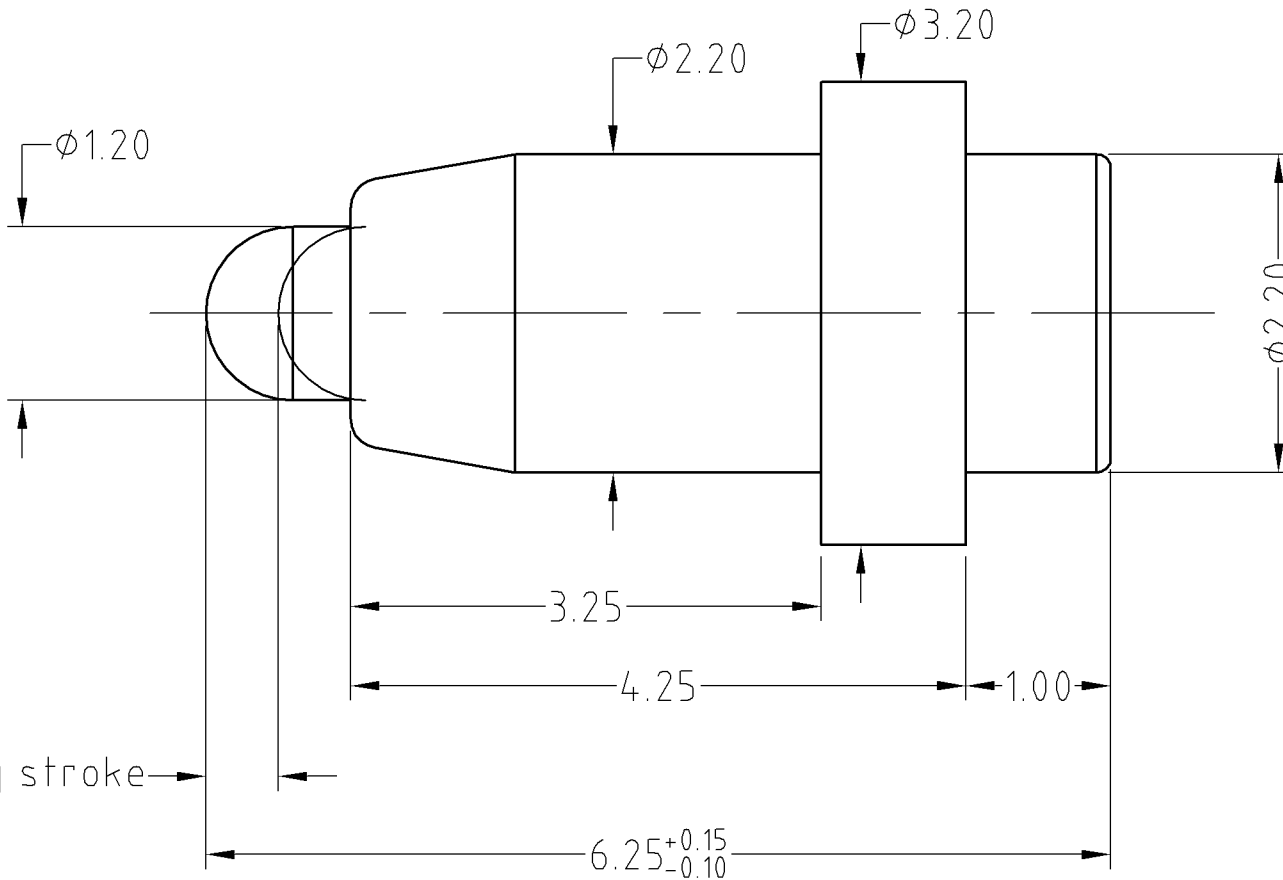
Mechanical:

- .Contact force: 70g±20g at 0.5mm working stroke
- .Full stroke: 1.00mm
- .Life test: 20,000 cycles

Electrical:

- .Rated current & voltage: DC 12V; 1A
- .Contact resistance: 50 milliohm Max.

To ensure the best usage, please operate it based on the working height.
Based on the engineering drawings, shall not exceed the maximum allowed compression.



Approve Sign

0.50working stroke

BOM		
Part	NO.	Qty
Plunger	B4-02-P1030	1
Barrel	B4-02-B1010	1
Spring	B4-02-S1001	1

SCALE	10:1	UNIT:mm	THIS DOCUMENT IS THE SOLE PROPERTY OF CFE CORPORATION CO.,LTD., AND SHOULD NOT BE USED IN WHOLE OR IN PART WITHOUT PRIOR WRITTEN PERMISSION.	
ANGEL	±1°	A4	SHEET: 1 of 1	
0-6	±0.10		PART NO.	BP40211
6-30	±0.15	DRAW	FILE NAME	BP402XX
30-150	±0.20	CHECK	TITLE.	Pogo pin connector
GENERAL TOLERANCE UNLESS OTHERWISE NOTED		APPRO		

CFE 东莞市川富电子有限公司
CFE CORPORATION CO.,LTD.

ECN(DCN) NO.	REV	DATE	DESCRIPTION
_____	D0	2013.05.30	NEW