

1

2

3

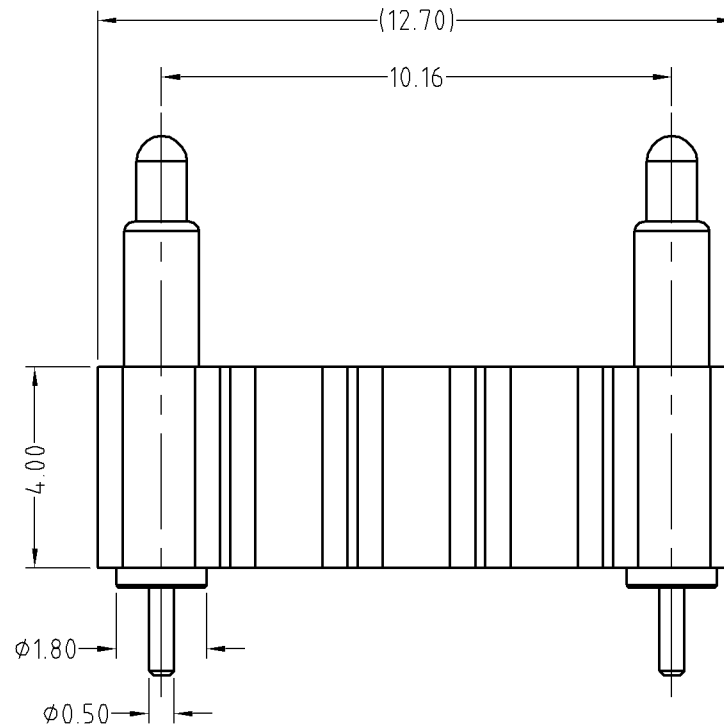
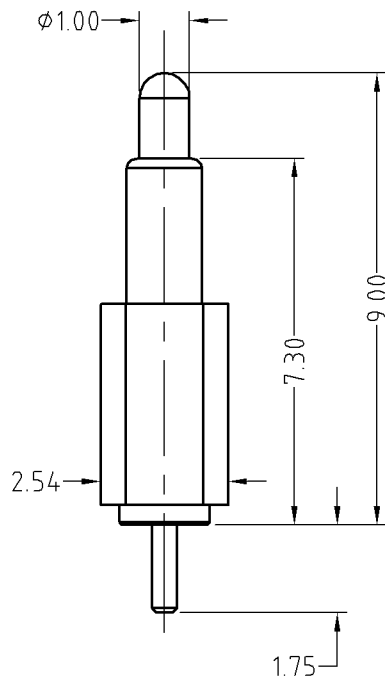
4

Note:  
 Materials:  
 .Insulator: Black high temperature plastics UL94 V-0  
 .Plunger: Brass Au over 0.125um Ni.  
 .Spring: SUS Au  
 .Barrel: Brass Au over 0.125um Ni.

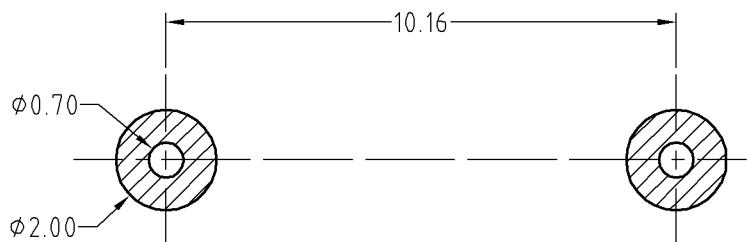
A Mechanical:  
 .Contact force: 70g±20g at 1.0mm working stroke  
 .Full stroke: 1.4mm  
 .Life test: 20,000 cycles

Electrical:  
 .Rated current & voltage: DC12V; 3A Max.  
 .Contact resistance: 50 milliohm Max.

Standard tolerances are:  
 .Diameters: +/-0.05mm  
 .Lengths: +/-0.15mm  
 .Angles: +/-2°



Approve Sign



Recommended pcb layout  
 Layout tolerance: ±0.05mm

SCALE	10:1	UNIT:mm	THIS DOCUMENT IS THE SOLE PROPERTY OF CFE CORPORATION CO.,LTD., AND SHOULD NOT BE USED IN WHOLE OR IN PART WITHOUT PRIOR WRITTEN PERMISSION.	
ANGEL	±1°	A4	SHEET: 1 of 1	
0~6	±0.05			
6~30	±0.10	DRAW	PART NO.	BP40311-02102E0A
30~150	±0.15	CHECK	FILE NAME	BP403XX
GENERAL TOLERANCE UNLESS OTHERWISE NOTED	APPRO		TITLE.	Pogo pin connector

**CFE** 东莞市川富电子有限公司  
 CFE CORPORATION CO.,LTD.

ECN(DCN) NO.	D0	2015.04.01	NEW
REV	DATE	DESCRIPTION	