

1

2

3

4

Note:

Materials:

.Plunger: Brass 0.4um Au over Ni

.Barrel: Brass 0.1um Au over Ni

.Spring: SUS surface treatment

Mechanical:

.Contact force: 80g Min. at 1.9mm working stroke

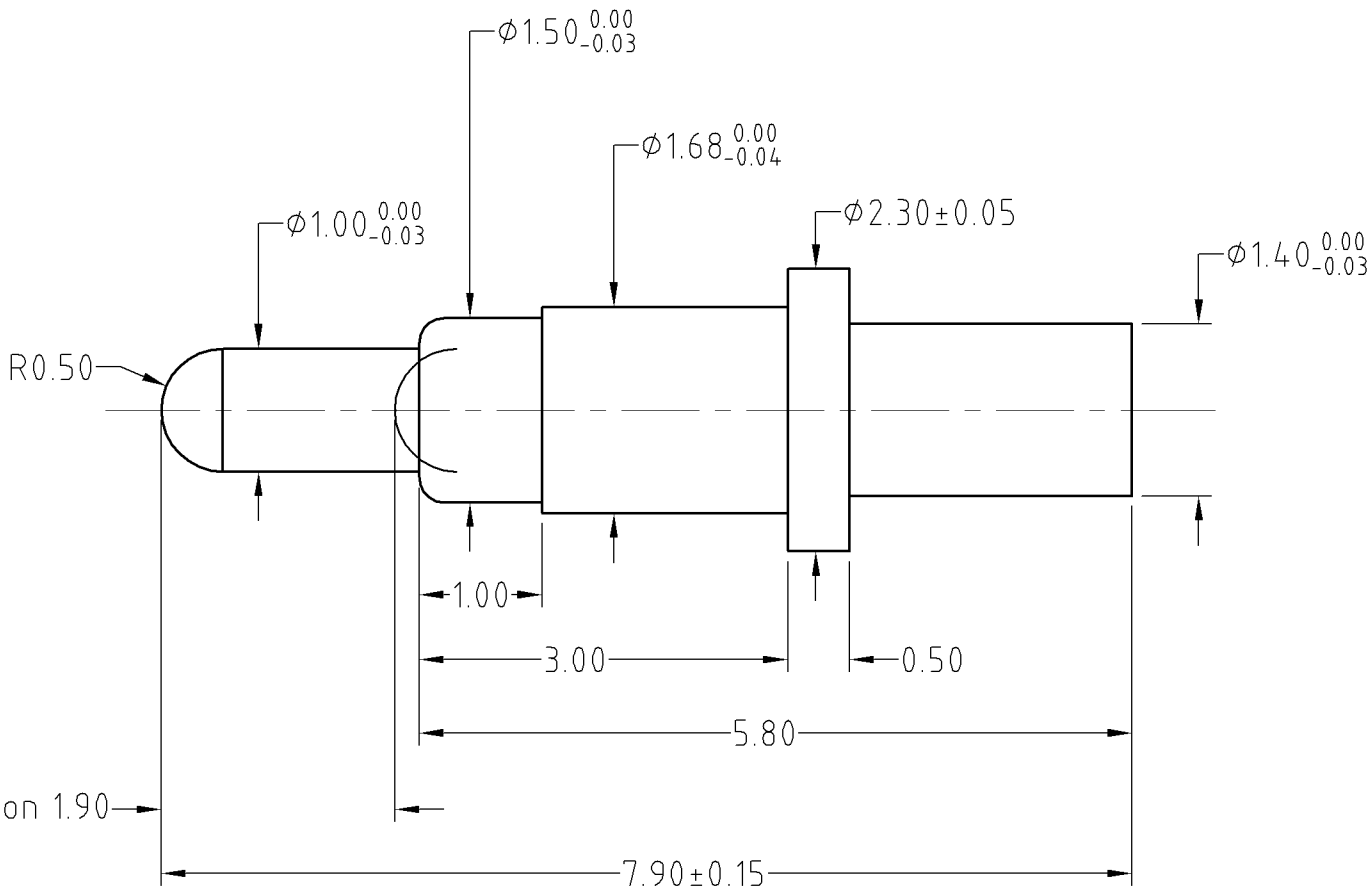
.Life test: 20,000 cycles

Electrical:

.Rated current & voltage: DC 12V; 1A

.Contact resistance: 50 milliohm Max.

To ensure the best usage, please operate it based on the working height.
Based on the engineering drawings, shall not exceed the maximum allowed compression.



A

B

C

D

ECN(DCN) NO.	D0	2013.05.30	NEW
REV	DATE	DESCRIPTION	

SCALE	10:1	UNIT:mm	THIS DOCUMENT IS THE SOLE PROPERTY OF CFE CORPORATION CO.,LTD., AND SHOULD NOT BE USED IN WHOLE OR IN PART WITHOUT PRIOR WRITTEN PERMISSION.	
ANGEL	$\pm 1^\circ$	A4	SHEET: 1 of 1	
0~6	± 0.10		PART NO.	BP40801
6~30	± 0.15	DRAW	FILE NAME	BP408XX
30~150	± 0.20	CHECK	TITLE.	Pagoda pin connector
GENERAL TOLERANCE UNLESS OTHERWISE NOTED		APPRO		

CFE 东莞市川富电子有限公司
CFE CORPORATION CO.,LTD.