

1

2

3

4

Note:

Materials:

.Plunger: Brass 0.4um Au over Ni

.Barrel: Brass 0.1um Au over Ni

.Spring: SUS surface treatment

Mechanical:

.Contact force: 80g Min. at 1.9mm working stroke

.Life test: 20,000 cycles

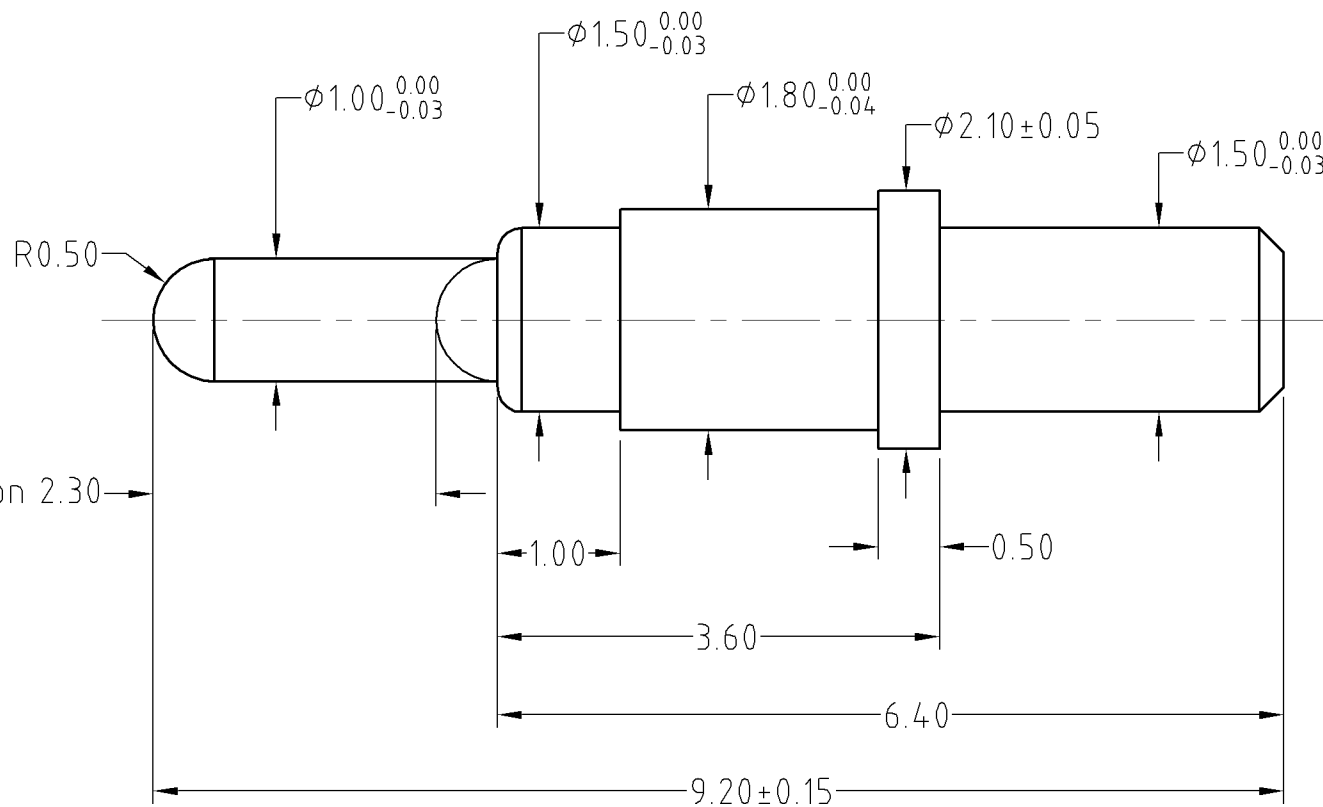
Electrical:

.Rated current &amp; voltage: DC 12V; 1A

.Contact resistance: 50 milliohm Max.

To ensure the best usage, please operate it based on the working height.

Based on the engineering drawings, shall not exceed the maximum allowed compression.



Max. compression 2.30

SCALE	10:1	UNIT:mm	THIS DOCUMENT IS THE SOLE PROPERTY OF CFE CORPORATION CO.,LTD., AND SHOULD NOT BE USED IN WHOLE OR IN PART WITHOUT PRIOR WRITTEN PERMISSION.	
ANGEL	$\pm 1^\circ$	A4	SHEET: 1 of 1	
0~6	$\pm 0.10$			
6~30	$\pm 0.15$	DRAW	PART NO.	BP40802
30~150	$\pm 0.20$	CHECK	FILE NAME	BP408XX
GENERAL TOLERANCE UNLESS OTHERWISE NOTED	APPRO		TITLE.	Pogo pin connector

**东莞市川富电子有限公司**  
**CFE CORPORATION CO.,LTD.**

	D0	2013.05.30	NEW
ECN(DCN) NO.	REV	DATE	DESCRIPTION