

Note:

Materials:

- .Plunger: Brass 0.025um Au over Ni
- .Barrel: Brass 0.025um Au over Ni
- .Spring: SUS surface treatment

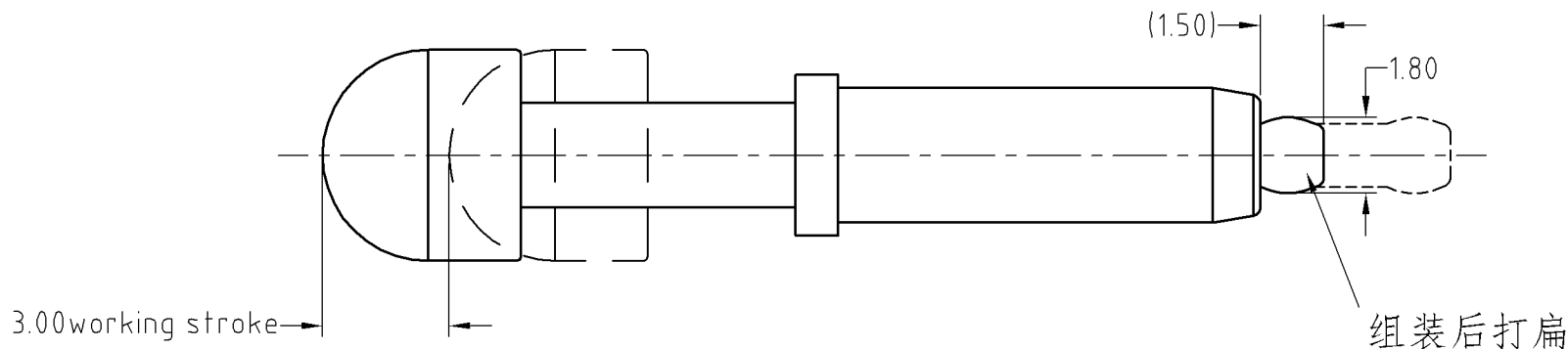
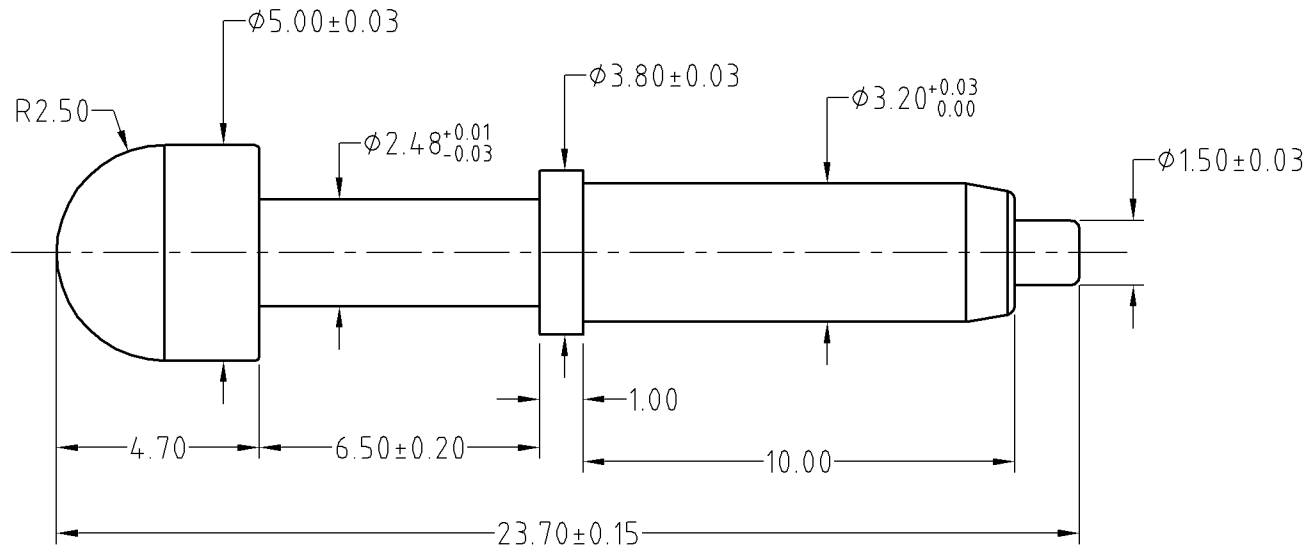
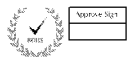
Mechanical:

- .Contact force: 75g±20g at 3.0mm working stroke
- .Full stroke: 6.5mm
- .Life test: 10,000 cycles

Electrical:

- .Rated current & voltage: DC 12V; 2A
- .Contact resistance: 50 milliohm Max.

To ensure the best usage, please operate it based on the working height.  
Based on the engineering drawings, shall not exceed the maximum allowed compression.



SCALE	10:1	UNIT:mm	THIS DOCUMENT IS THE SOLE PROPERTY OF CFE CORPORATION CO.,LTD., AND SHOULD NOT BE USED IN WHOLE OR IN PART WITHOUT PRIOR WRITTEN PERMISSION.	
ANGEL	±1°	A4	SHEET: 1 of 1	
0~6	±0.10			
6~30	±0.15	DRAW	PART NO.	BP41301
30~150	±0.20	CHECK	FILE NAME	BP413XX
GENERAL TOLERANCE UNLESS OTHERWISE NOTED		APPRO	TITLE.	Pogo pin connector



_____	D0	2015.04.16	NEW
ECN(DCN) NO.	REV	DATE	DESCRIPTION