

1

2

3

4

Note:

Materials:

.Plunger: Brass 0.25um Au over Ni

.Barrel: Brass 0.25um Au over Ni

.Spring: SUS surface treatment

Mechanical:

.Contact force: 60g±20g at 7.0mm working height

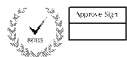
.Life test: 20,000 cycles

Electrical:

.Rated current & voltage: DC 12V; 3A

.Contact resistance: 20 milliohm Max.

To ensure the best usage, please operate it based on the working height.  
Based on the engineering drawings, shall not exceed the maximum allowed compression.

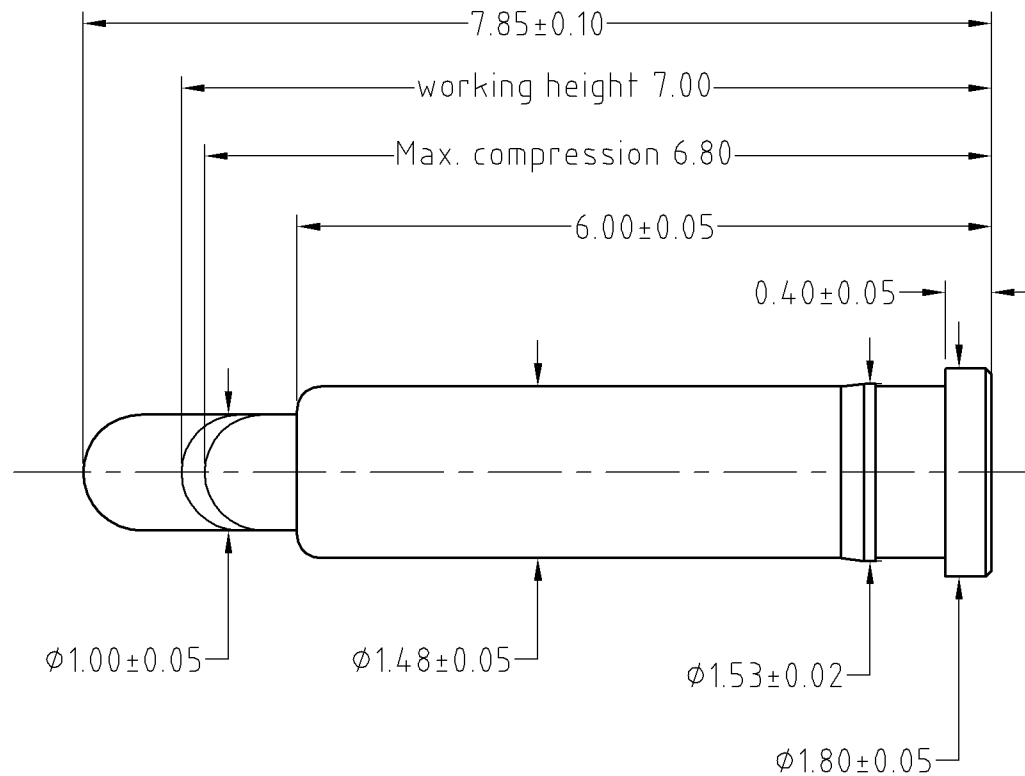
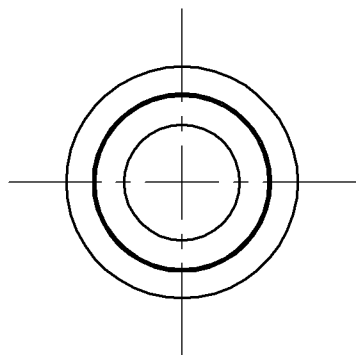
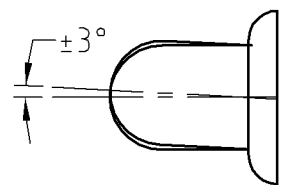


A

B

C

D



SCALE	10:1	UNIT:mm	THIS DOCUMENT IS THE SOLE PROPERTY OF CFE CORPORATION CO.,LTD., AND SHOULD NOT BE USED IN WHOLE OR IN PART WITHOUT PRIOR WRITTEN PERMISSION.	
ANGEL	±1°	A4	SHEET: 1 of 1	
0~6	±0.10			
6~30	±0.15	DRAW	PART NO.	BP41811
30~150	±0.20	CHECK	FILE NAME	BP418XX
GENERAL TOLERANCE UNLESS OTHERWISE NOTED		APPRO	TITLE.	Pogo pin connector



_____	D0	2013.05.30	NEW
ECN(DCN) NO.	REV	DATE	DESCRIPTION