

Note:
 Materials:
 .Insulator: Black high temperature plastics U194 V-0
 .Plunger: Brass Au 0.5um over Ni.
 .Spring: SUS surface treatment
 .Barrel: Brass Au 0.5um over Ni.

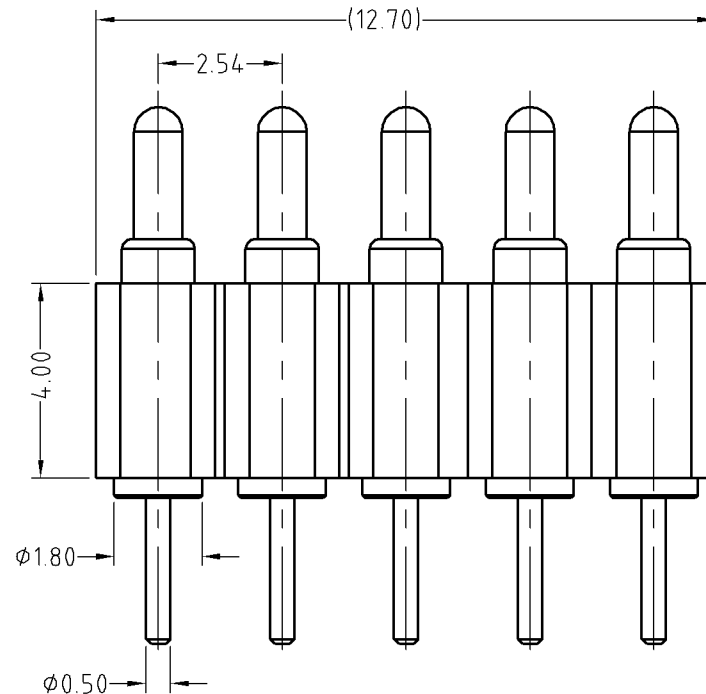
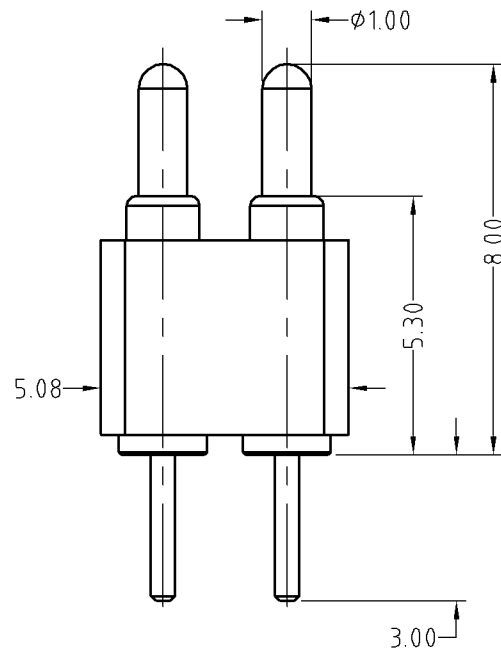
A Mechanical:
 .Contact force: 70g±20g at 1.0mm working stroke
 .Full stroke: 1.4mm
 .Life test: 50,000 cycles

Electrical:
 .Rated current & voltage: DC12V; 3A Max.
 .Contact resistance: 50 milliohm Max.

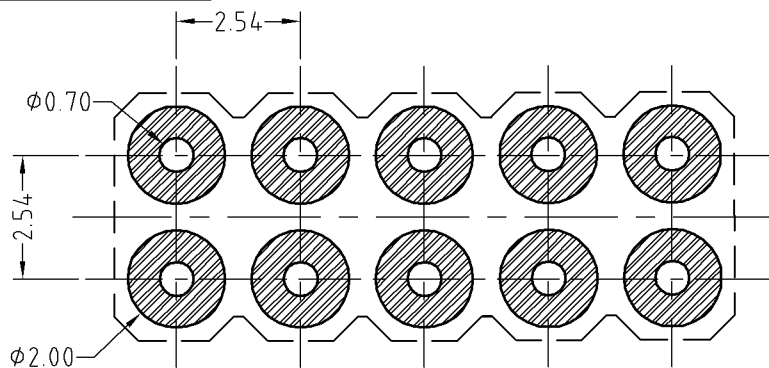
Standard tolerances are:
 .Diameters: +/-0.05mm
 .Lengths: +/-0.15mm
 .Angles: +/-2°



Approve Sign



BP42711-10254F0A		
Part	NO.	Qty
pin	BP4.2711	10
Insulator	H254-10F01	1



Recommended pcb layout
 Layout tolerance: ±0.05mm

SCALE	10:1	UNIT:mm	THIS DOCUMENT IS THE SOLE PROPERTY OF CFE CORPORATION CO.,LTD., AND SHOULD NOT BE USED IN WHOLE OR IN PART WITHOUT PRIOR WRITTEN PERMISSION.	CFE 东莞市川富电子有限公司 CFE CORPORATION CO.,LTD.	
ANGEL	±1°	A4			
0-6	±0.05		SHEET: 1 of 1	PART NO.	BP42711-10254F0A
6-30	±0.10	DRAW		FILE NAME	BP427XX
30-150	±0.15	CHECK		TITLE	Pogo pin connector
GENERAL TOLERANCE UNLESS OTHERWISE NOTED		APPRO			

ECN(DCN) NO.	A0	2015.05.18	NEW
REV	DATE	DESCRIPTION	