

Note:

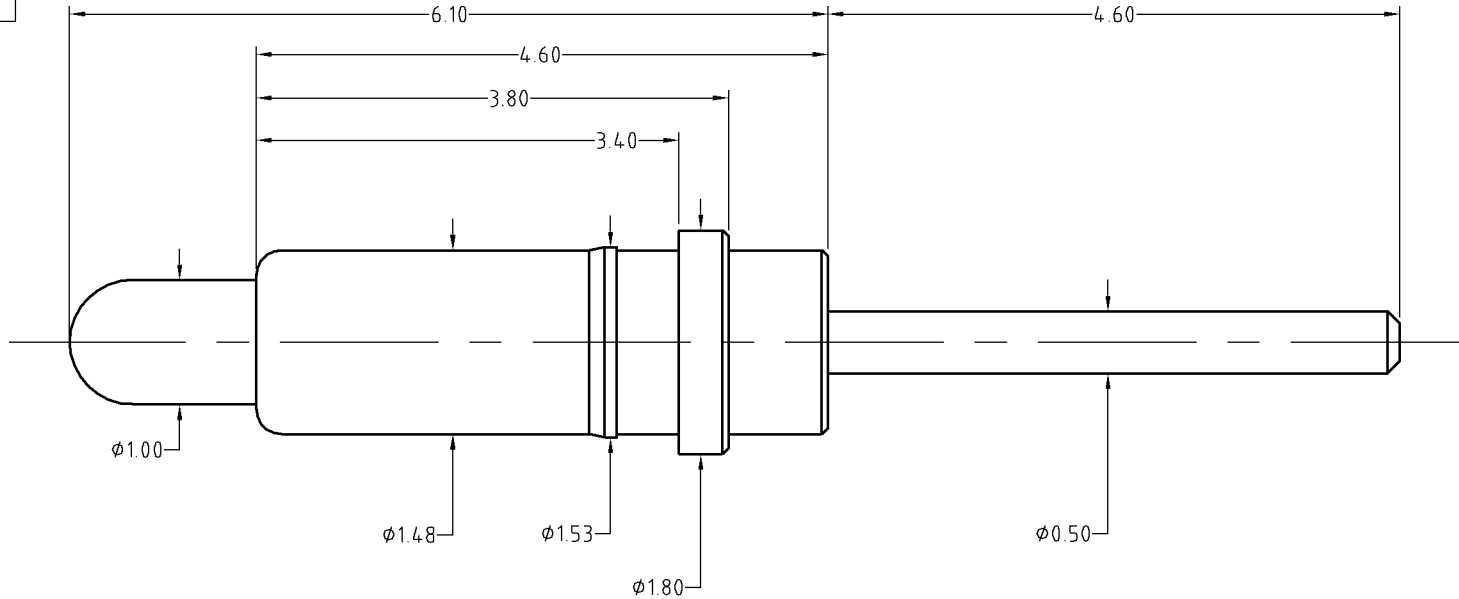
1. Cannot be used as the charging.

To ensure the best usage, please operate it based on the working height.  
Based on the engineering drawings, shall not exceed the maximum allowed compression.



Approve Sign

Working stroke	1.0 mm
Spring force	70g+/-20g
Life test	20,000 cycles
Rated current	1 A
Rated voltage	12 V
Contact resistance	50 milliohm Max.



BOM			
No.	Qty	Part	Spec
B434-P1005	1	Plunger	Brass C3604 0.125um Au over Ni
B434-B1005	1	Barrel	Brass C3604 0.125um Au over Ni
M200-S1001	1	Spring	SUS 304 Au 0.025um

SCALE	10:1	UNIT:mm	THIS DOCUMENT IS THE SOLE PROPERTY OF CFE CORPORATION CO.,LTD., AND SHOULD NOT BE USED IN WHOLE OR IN PART WITHOUT PRIOR WRITTEN PERMISSION.	<b>CFE</b> 东莞市川富电子有限公司 CFE CORPORATION CO.,LTD.
ANGEL	±1°	A4		
0-6	±0.05		SHEET: 1 of 1	
6-30	±0.10	DRAW		PART NO. BP43411
30-150	±0.15	CHECK		FILE NAME BP434XX
GENERAL TOLERANCE UNLESS OTHERWISE NOTED		APPRO		TITLE. Pogo pin connector

样品图纸

_____	D0	2015.05.18	NEW
ECN(DCN) NO.	REV	DATE	DESCRIPTION