

Note:

Materials:

.Insulator: Black high temperature plastics UL94 V-0

.Plunger: Brass 0.25um Au over Ni.

.Spring: SUS surface treatment

.Barrel: Brass 0.25um Au over Ni.

A Mechanical:

.Contact force: 70g±20g at 1.0mm working stroke

.Full stroke: 1.4mm

.Life test: 50,000 cycles

Electrical:

.Rated current & voltage: DC12V; 3A Max.

.Contact resistance: 50 milliohm Max.

Standard tolerances are:

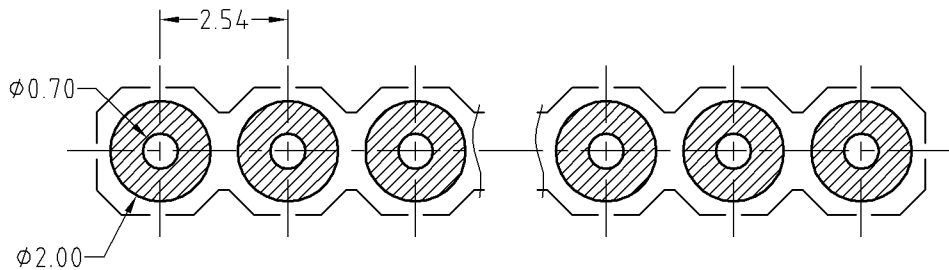
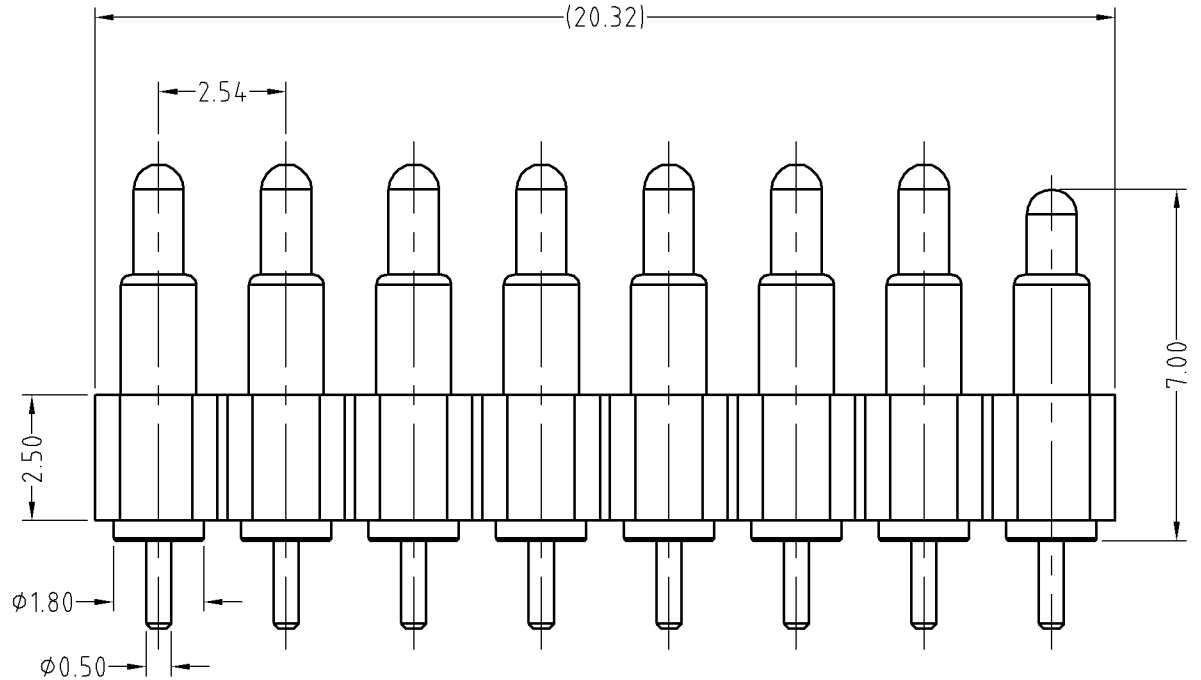
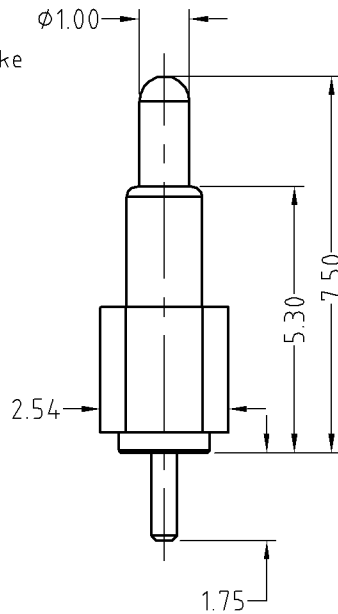
.Diameters: +/-0.05mm

.Lengths: +/-0.15mm

.Angles: +/-2°



BOM		
Part	NO.	Qty
pogo pin	MP310-2122	1
pogo pin	MP310-3122	7
Insulator	H254-08A01	1



Recommended pcb layout  
Layout tolerance: ±0.05mm

SCALE	10:1	UNIT:mm	THIS DOCUMENT IS THE SOLE PROPERTY OF CFE CORPORATION CO.,LTD., AND SHOULD NOT BE USED IN WHOLE OR IN PART WITHOUT PRIOR WRITTEN PERMISSION.	
ANGEL	±1°	A4	SHEET: 1 of 1	
0~6	±0.05			
6~30	±0.10	DRAW	PART NO.	BP43712-08254A0A
30~150	±0.15	CHECK	FILE NAME	BP437XX
GENERAL TOLERANCE UNLESS OTHERWISE NOTED	APPRO		TITLE.	Pogo pin connector

**CFE** 东莞市川富电子有限公司  
CFE CORPORATION CO.,LTD.

ECN(DCN) NO.	REV	DATE	DESCRIPTION
	D0	2014.12.24	NEW