

Note:

Materials:

.Plunger: Brass 0.075um Au over Ni

.Barrel: Brass 0.075um Au over Ni

.Spring: SUS surface treatment

Mechanical:

.Contact force: 60g±20g at 1.0mm working stroke

.Life test: 20,000 cycles

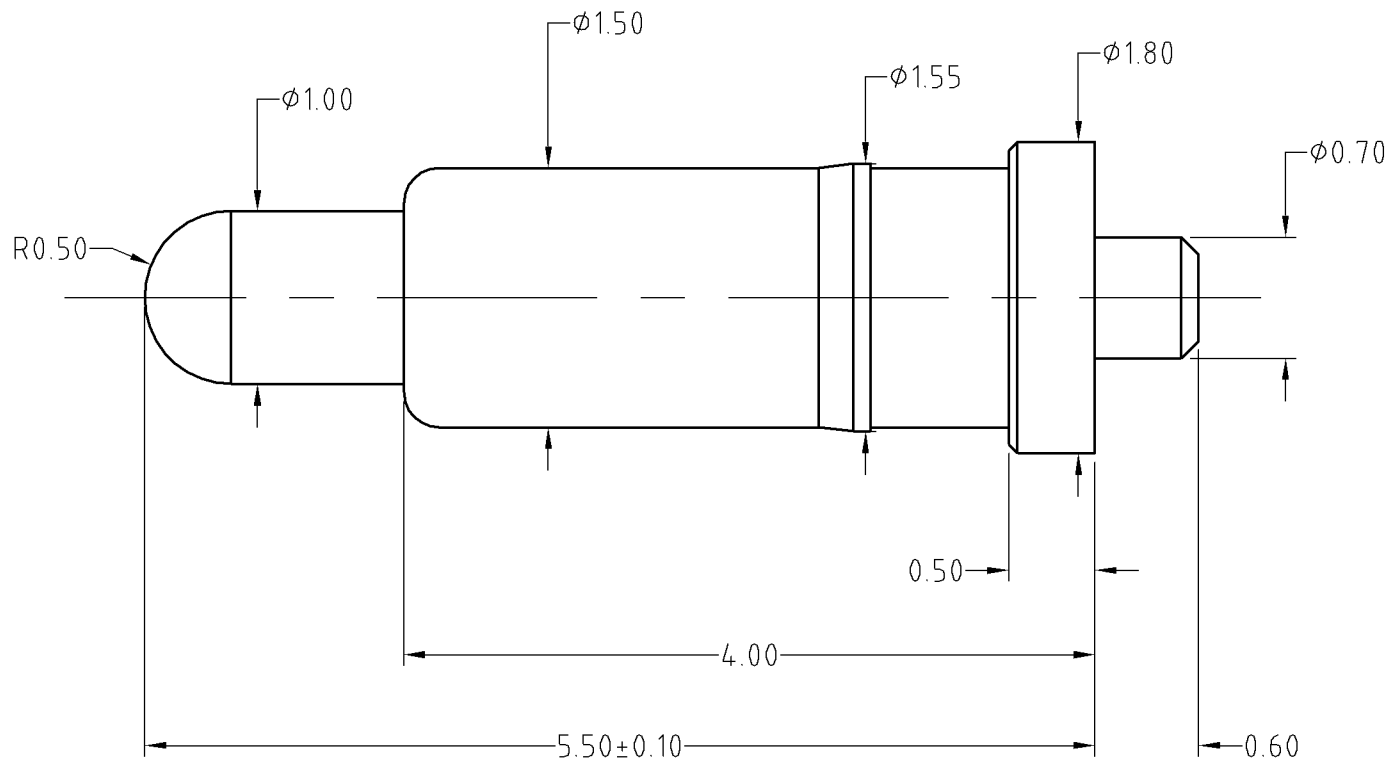
Electrical:

.Rated current & voltage: DC 12V; 1A

.Contact resistance: 50 milliohm Max.

To ensure the best usage, please operate it based on the working height.

Based on the engineering drawings, shall not exceed the maximum allowed compression.



BOM		
Part	NO.	Qty
Plunger	B115-P1003	1
Barrel	B446-B1003	1
Spring	B115-S1001	1

SCALE	10:1	UNIT:mm	THIS DOCUMENT IS THE SOLE PROPERTY OF CFE CORPORATION CO.,LTD., AND SHOULD NOT BE USED IN WHOLE OR IN PART WITHOUT PRIOR WRITTEN PERMISSION.	<b>CFE</b> 东莞市川富电子有限公司 CFE CORPORATION CO.,LTD.	
ANGEL	±1°	A4			
0-6	±0.05		SHEET: 1 of 1	PART NO.	BP44611
6-30	±0.10	DRAW		FILE NAME	BP446XX
30-150	±0.15	CHECK		TITLE	Pogo pin connector
GENERAL TOLERANCE UNLESS OTHERWISE NOTED		APPRO			

ECN(DCN) NO.	REV	DATE	DESCRIPTION
	A0	2015.07.24	NEW