

Note:

Materials:

.Insulator: Black high temperature plastics UI94 V-0

.Plunger: Brass Au 0.25um over Ni.

.Spring: SUS surface treatment

.Barrel: Brass Au 0.25um over Ni.

A Mechanical:

.Contact force: 30g±20g at 1.0mm working stroke

.Full stroke: 1.4mm

.Life test: 10,000 cycles

Electrical:

.Rated current & voltage: DC12V; 1A Max.

.Contact resistance: 50 milliohm Max.

Standard tolerances are:

.Diameters: +/-0.05mm

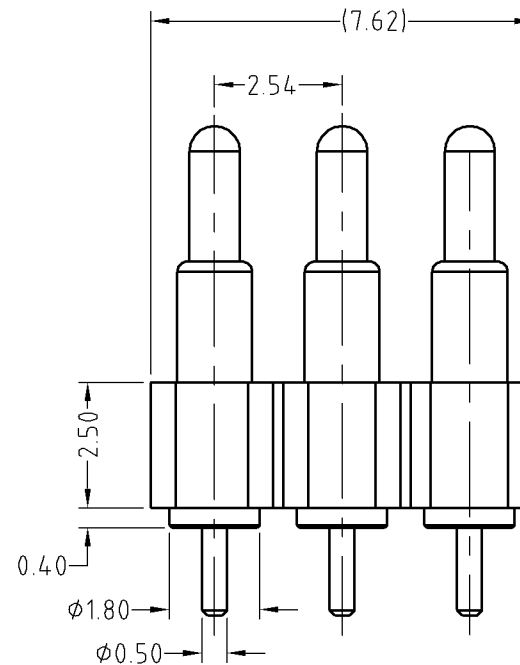
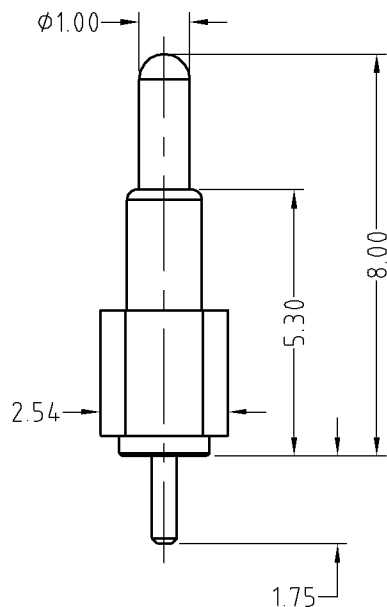
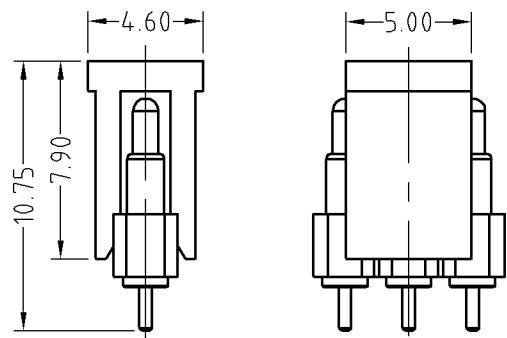
.Lengths: +/-0.15mm

.Angles: +/-2°

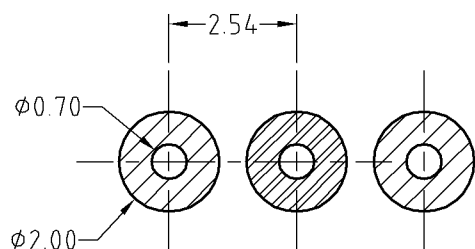
B



Approve Sign

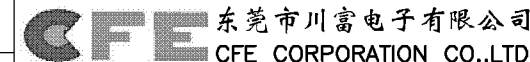


C



Recommended pcb layout
Layout tolerance: ±0.05mm

SCALE	10:1	UNIT:mm	THIS DOCUMENT IS THE SOLE PROPERTY OF CFE CORPORATION CO.,LTD., AND SHOULD NOT BE USED IN WHOLE OR IN PART WITHOUT PRIOR WRITTEN PERMISSION.	
ANGEL	±1°	A4	SHEET: 1 of 1	
0~6	±0.05			
6~30	±0.10	DRAW	PART NO.	BP44811-A03113A
30~150	±0.15	CHECK	FILE NAME	BP448XX
GENERAL TOLERANCE UNLESS OTHERWISE NOTED	APPRO		TITLE	Pogo pin connector



D

ECN(DCN) NO.	D0	2015.06.09	NEW
REV	DATE	DESCRIPTION	