

1

2

3

4

Note:

Materials:

- .Plunger: Brass3604 0.25um Min. Au over 1.25um Min. Ni
- .Barrel: Brass3604 0.25um Min. Au over 1.25um Min. Ni
- .Spring: SUS 304 0.025um Au

Mechanical:

- .Contact force: 70g±20g at 1.0mm working stroke
- .Max. stroke: 1.4mm
- .Life test: 50,000 cycles

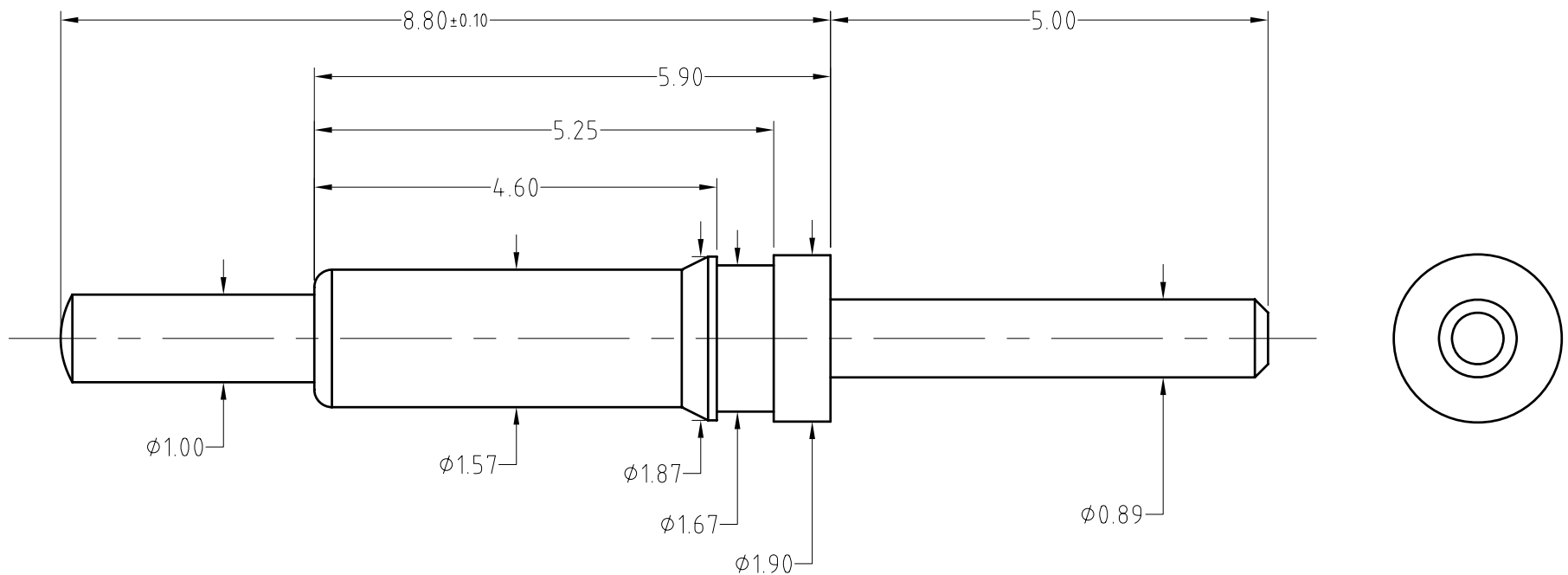
Electrical:

- .Rated current & voltage: DC 30V; 4A
- .Contact resistance: 50 milliohm Max.

To ensure the best usage, please operate it based on the working height.
Based on the engineering drawings, shall not exceed the maximum allowed compression.



Approve Sign



BOM		
Part	NO.	Qty
Plunger	B457-P1010	1
Barrel	B457-B1010	1
Spring	M300-S1001	1

SCALE	10:1	UNIT:mm	THIS DOCUMENT IS THE SOLE PROPERTY OF CFE CORPORATION CO.,LTD., AND SHOULD NOT BE USED IN WHOLE OR IN PART WITHOUT PRIOR WRITTEN PERMISSION.	SHEET: 1 of 1	PART NO.	BP45711
ANGEL	±1°	A4				
0~6	±0.10				FILE NAME	BP457XX
6~30	±0.20	DRAW			TITLE.	Pogo pin connector
30~150	±0.30	CHECK				
GENERAL TOLERANCE UNLESS OTHERWISE NOTED		APPRO				



ECN(DCN) NO.	REV	DATE	DESCRIPTION
	D1	2015.07.03	
	D0	2015.06.16	NEW