

1

2

3

4

Note:

Materials:

- .Plunger: Brass 0.025um Au over Ni
- .Barrel: Brass 0.025um Au over Ni
- .Spring: SUS surface treatment

Mechanical:

- .Contact force: 60g±20g at 1.0mm working stroke
- .Full stroke:1.3mm
- .Life test: 20,000 cycles

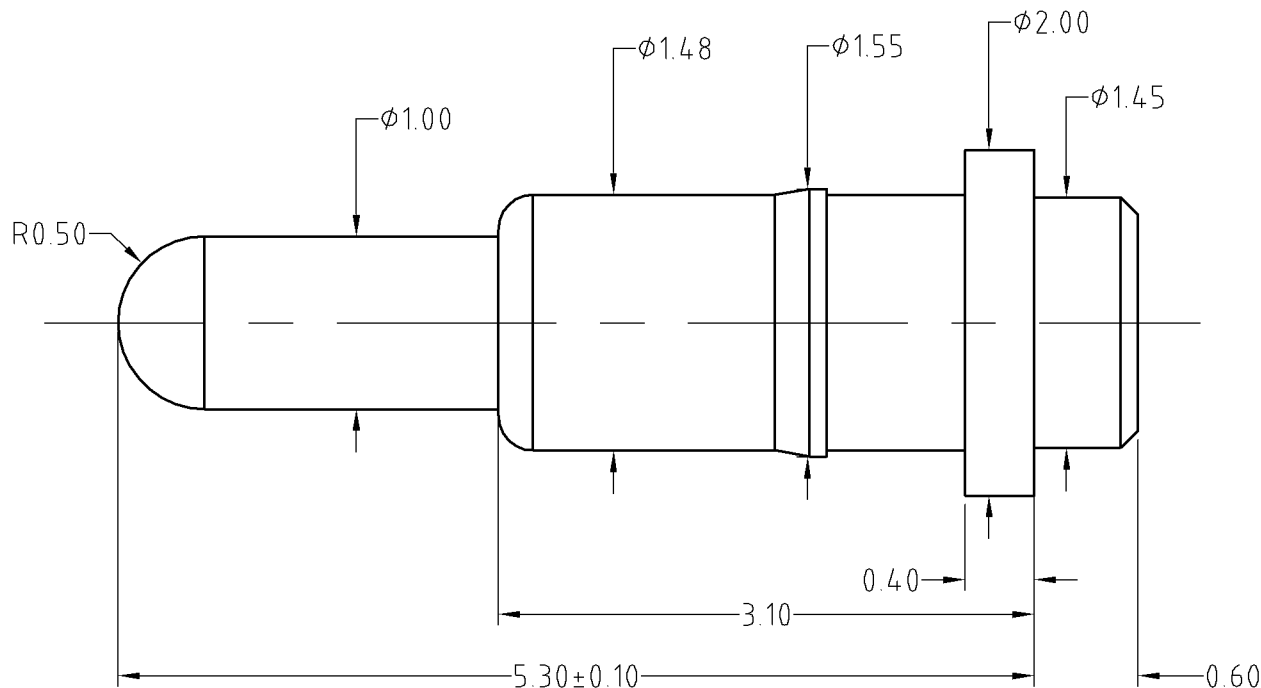
Electrical:

- .Rated current & voltage: DC 12V; 1A MAX
- .Contact resistance: 50 milliohm Max.

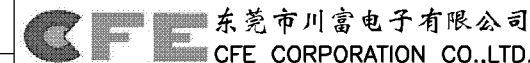
To ensure the best usage, please operate it based on the working height.
Based on the engineering drawings, shall not exceed the maximum allowed compression.



Approve Sign



SCALE	10:1	UNIT:mm	THIS DOCUMENT IS THE SOLE PROPERTY OF CFE CORPORATION CO.,LTD., AND SHOULD NOT BE USED IN WHOLE OR IN PART WITHOUT PRIOR WRITTEN PERMISSION.	
ANGEL	±1°	A4	SHEET: 1 of 1	
0-6	±0.05			
6-30	±0.10	DRAW	PART NO.	BP47511
30-150	±0.15	CHECK	FILE NAME	BP475XX
GENERAL TOLERANCE UNLESS OTHERWISE NOTED	APPRO		TITLE	Pogo pin connector



_____	D0	2015.07.13	NEW
ECN(DCN) NO.	REV	DATE	DESCRIPTION