

1

2

3

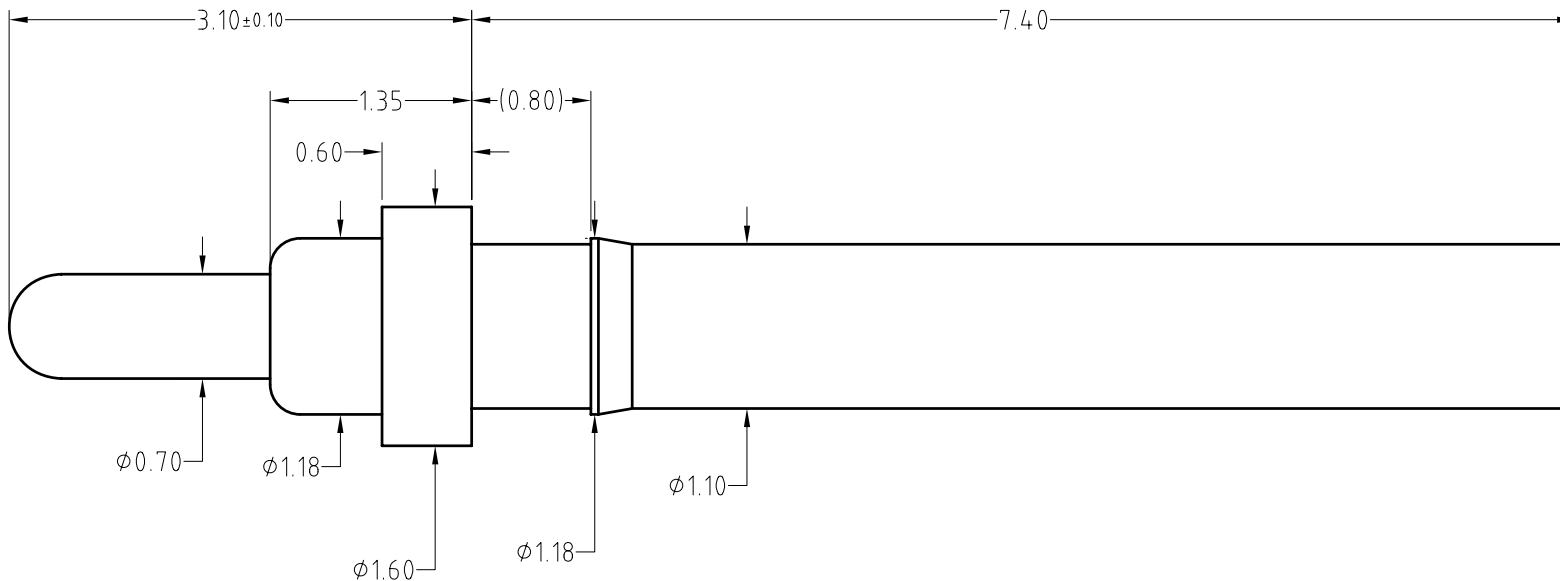
4

Note:
 Materials:
 .Plunger: Brass 0.5um Au over Ni
 .Barrel: Brass 0.5um Au over Ni
 .Spring: SUS 304 Au
 Mechanical:
 .Contact force: 100g±20% at 1.20mm working Stroke
 .Max. compression: 1.40mm
 .Life test: 300,000 cycles
 Electrical:
 .Rated current & voltage: DC 12V; 0.5A
 .Contact resistance: 50 milliohm Max.

To ensure the best usage, please operate it based on the working height.
 Based on the engineering drawings, shall not exceed the maximum allowed compression.



Approve Sign



BOM		
Part	NO.	Qty
Plunger	B535-P1020	1
Barrel	B535-B1020	1
Spring	B535-S1001	1

SCALE	10:1	UNIT:mm	THIS DOCUMENT IS THE SOLE PROPERTY OF CFE CORPORATION CO.,LTD., AND SHOULD NOT BE USED IN WHOLE OR IN PART WITHOUT PRIOR WRITTEN PERMISSION.	东莞市川富电子有限公司 CFE CORPORATION CO.,LTD.
ANGEL	±2°	A4		
0~6	±0.10		SHEET: 1 of 1	
6~30	±0.20	DRAW		PART NO. BP53511
30~150	±0.30	CHECK		FILE NAME BP535XX
GENERAL TOLERANCE UNLESS OTHERWISE NOTED		APPRO		TITLE. Pogo pin

_____	A0	2015.12.08	NEW
ECN(DCN) NO.	REV	DATE	DESCRIPTION