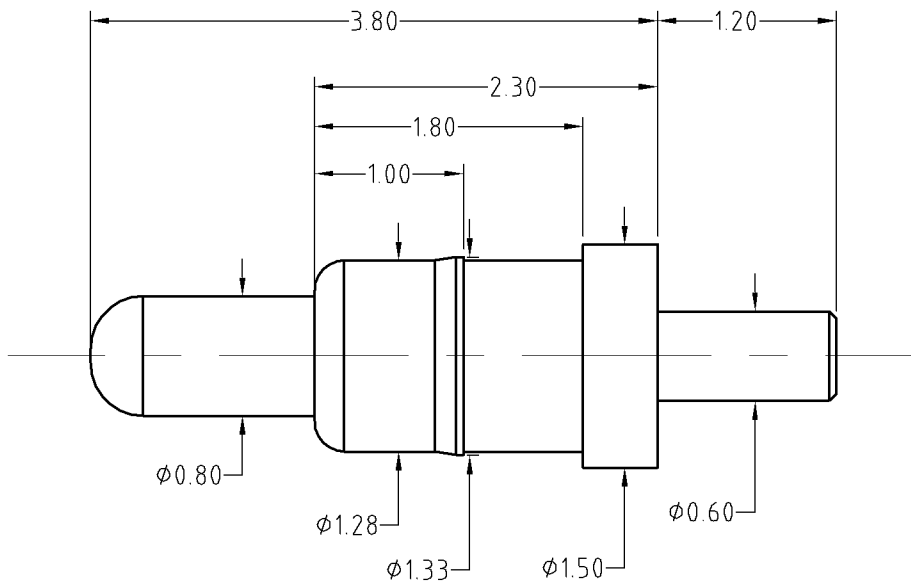


Note:
 Materials:
 .Plunger: Brass 0.25um Au over Ni
 .Barrel: Brass 0.25um Au over Ni
 .Spring: SUS 304 Au
 Mechanical:
 .Contact force: 55g±20g at 1.0mm working stroke
 .Life test: 20,000 cycles
 Electrical:
 .Rated current & voltage: DC 12V; 1A
 .Contact resistance: 50 milliohm Max.
 .Cannot be used as the charging

To ensure the best usage, please operate it based on the working height.
 Based on the engineering drawings, shall not exceed the maximum allowed compression.



Approve Sign



BOM		
Part	NO.	Qty
Plunger	B546-P1010	1
Barrel	B546-B1010	1
Spring	B546-S1001	1

SCALE	10:1	UNIT:mm	THIS DOCUMENT IS THE SOLE PROPERTY OF CFE CORPORATION CO.,LTD., AND SHOULD NOT BE USED IN WHOLE OR IN PART WITHOUT PRIOR WRITTEN PERMISSION.	CFE 东莞市川富电子有限公司 CFE CORPORATION CO.,LTD.
ANGEL	±2°	A4		
0-6	±0.10		SHEET: 1 of 1	
6-30	±0.20	DRAW		PART NO. BP54611
30-150	±0.30	CHECK		FILE NAME BP546XX
GENERAL TOLERANCE UNLESS OTHERWISE NOTED	APPRO			TITLE. Pogo pin

ECN(DCN) NO.	A0	2015.12.28	NEW
REV	DATE	DESCRIPTION	