

1

2

3

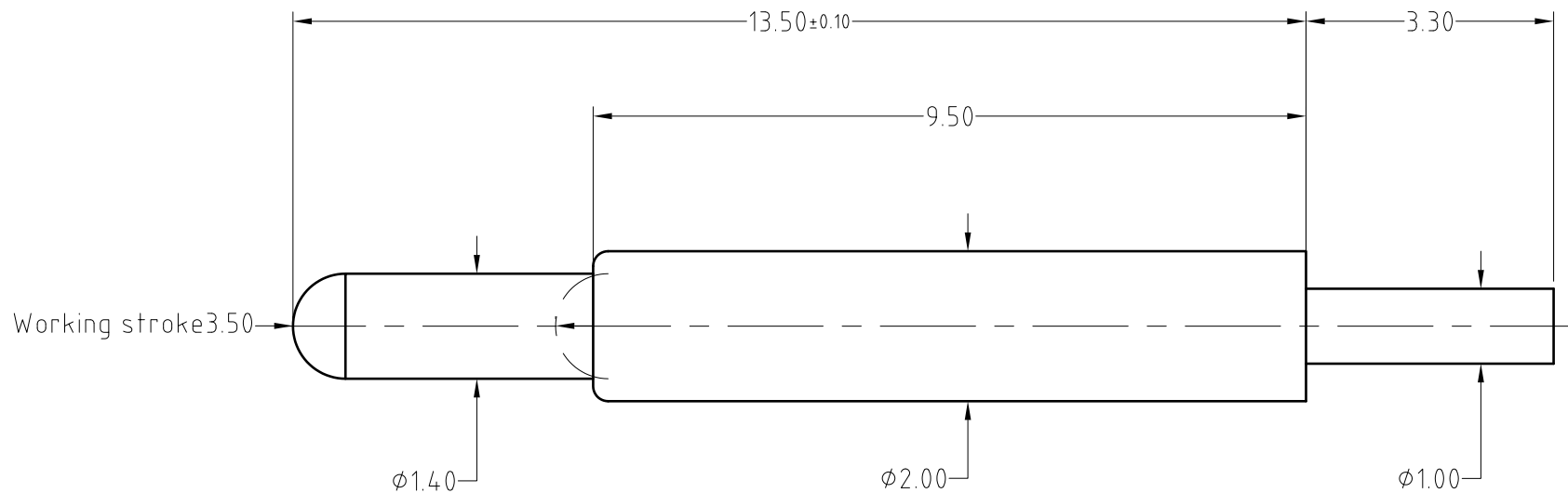
4

Note:
 Materials:
 .Plunger: Brass 0.50um Au over Ni
 .Barrel: Brass 0.25um Au over Ni
 .Spring: SUS 304 Au
 Mechanical:
 .Contact force: 180g±20% at 3.5mm working stroke
 .Max. compression: 4.0mm
 .Life test: 30,000 cycles
 Electrical:
 .Rated current & voltage: DC 12V; 2A
 .Contact resistance: 50 milliohm Max.

To ensure the best usage, please operate it based on the working height.
 Based on the engineering drawings, shall not exceed the maximum allowed compression.



Approve Sign



SCALE	10:1	UNIT:mm	THIS DOCUMENT IS THE SOLE PROPERTY OF CFE CORPORATION CO.,LTD., AND SHOULD NOT BE USED IN WHOLE OR IN PART WITHOUT PRIOR WRITTEN PERMISSION.	东莞市川富电子有限公司 CFE CORPORATION CO.,LTD.	
ANGEL	±2°	A4			
0~6	±0.05			SHEET: 1 of 1	
6~30	±0.10	DRAW		PART NO.	BP54911
30~150	±0.15	CHECK	FILE NAME	BP549XX	
GENERAL TOLERANCE UNLESS OTHERWISE NOTED			APPRO	TITLE.	Pogo pin

_____	D0	2015.11.18	NEW
ECN(DCN) NO.	REV	DATE	DESCRIPTION