

1

2

3

4

Note:

Materials:  
 .Plunger: Brass 0.375um Au over Ni  
 .Barrel: Brass 0.25um Au over Ni  
 .Spring: SUS 304 Au

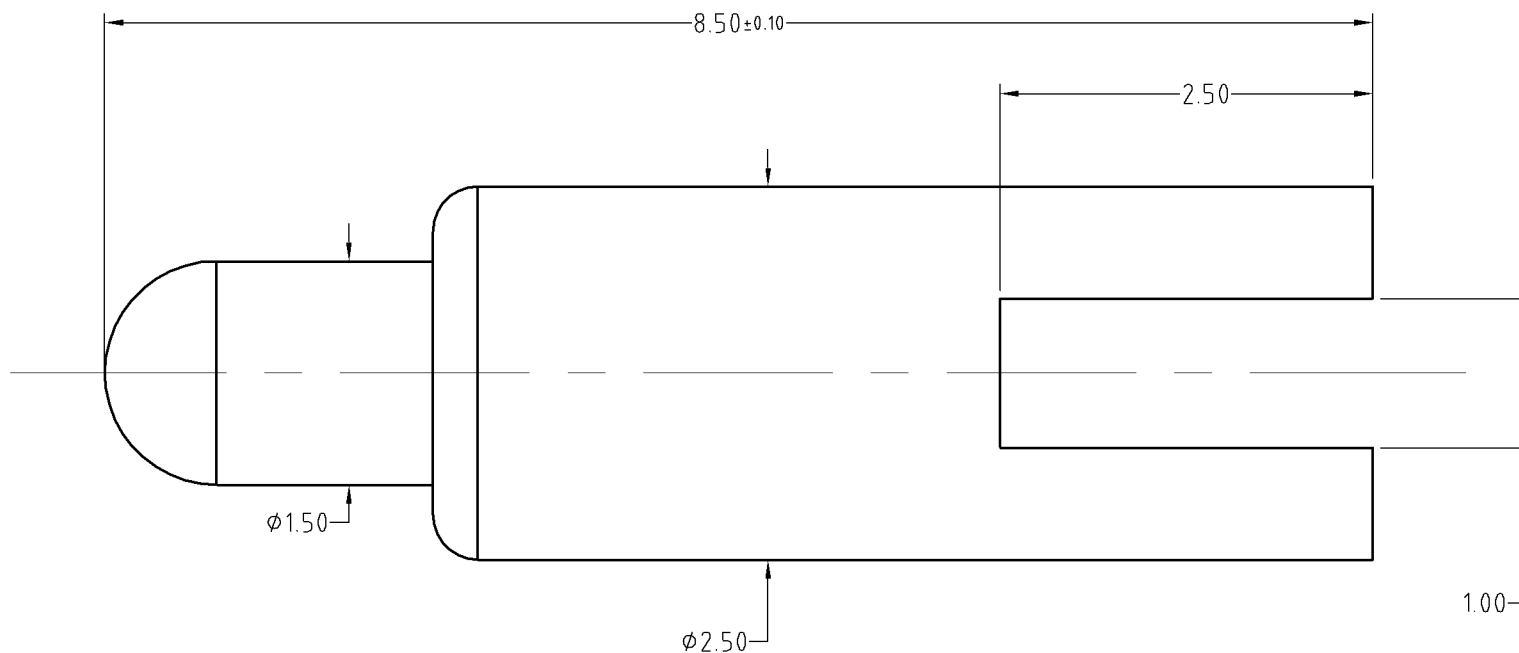
Mechanical:  
 .Contact force: 110g±20% at 1.0mm working storke  
 .Life test: 20,000 cycles

Electrical:  
 .Rated current & voltage: DC 12V; 1A  
 .Contact resistance: 50 milliohm Max.  
 .Cannot be used as the charging

To ensure the best usage, please operate it based on the working height.  
 Based on the engineering drawings, shall not exceed the maximum allowed compression.



Approve Sign



SCALE	10:1	UNIT:mm	THIS DOCUMENT IS THE SOLE PROPERTY OF CFE CORPORATION CO.,LTD., AND SHOULD NOT BE USED IN WHOLE OR IN PART WITHOUT PRIOR WRITTEN PERMISSION.	
ANGEL	±2°	A4	SHEET: 1 of 1	
0-6	±0.05			
6-30	±0.10	DRAW	PART NO.	BP57711
30-150	±0.15	CHECK	FILE NAME	BP577XX
GENERAL TOLERANCE UNLESS OTHERWISE NOTED	APPRO	TITLE	Pogo pin	

**CFE** 东莞市川富电子有限公司  
 CFE CORPORATION CO.,LTD.

ECN(DCN) NO.	D0	2015.12.30	NEW
REV	DATE	DESCRIPTION	