

1

2

3

4

Note:

Materials:
 .Plunger: Brass 0.075um Au over Ni
 .Barrel: Brass 0.075um Au over Ni
 .Spring: SUS 304 Au
 .Bead: Ceramic bead

Mechanical:

.Contact force: 40g±20g at 1.0mm working stroke
 .Max. stroke: 1.10mm
 .Life test: 20,000 cycles

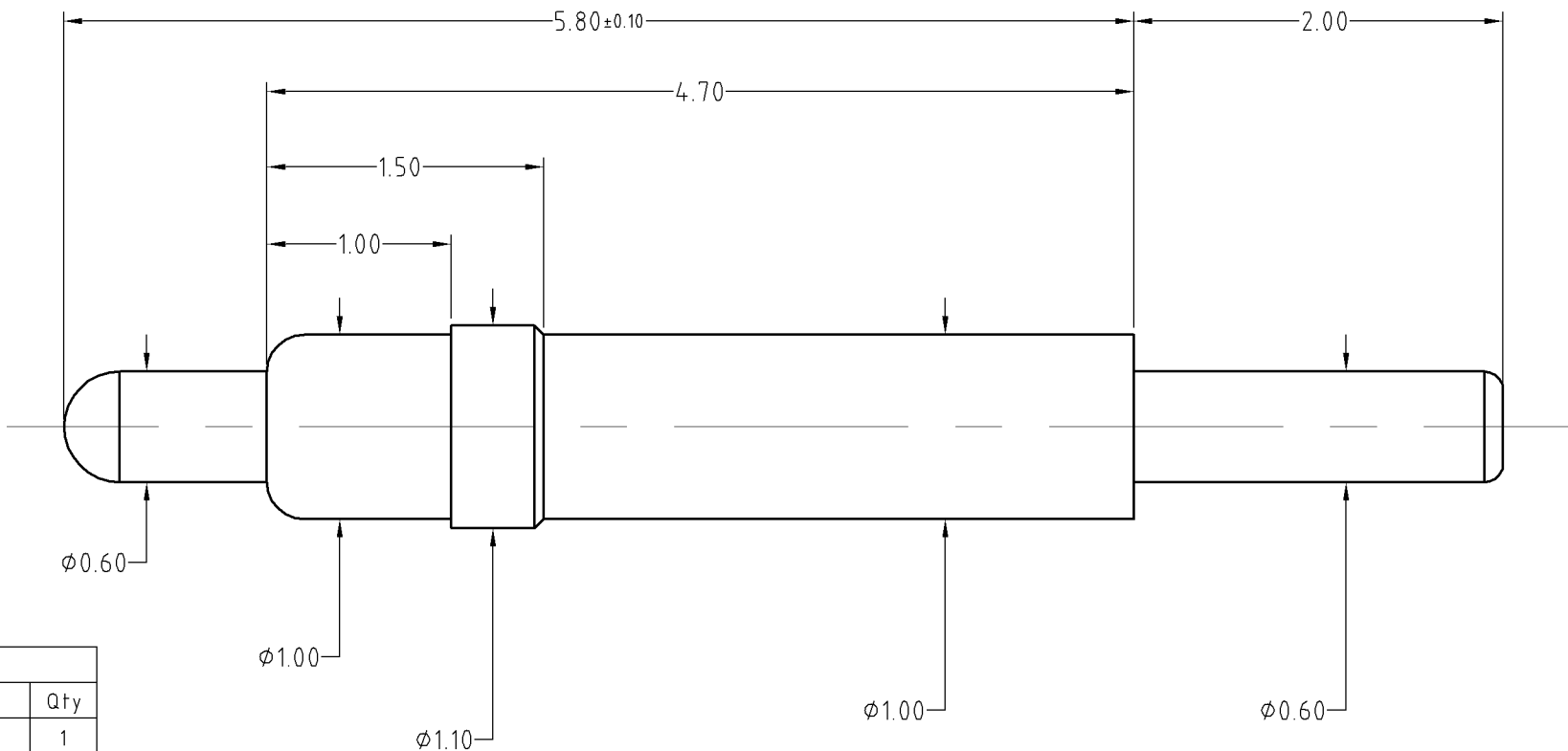
Electrical:

.Rated current & voltage: DC 12V; 2A
 .Contact resistance: 50 milliohm Max.

To ensure the best usage, please operate it based on the working height.
 Based on the engineering drawings, shall not exceed the maximum allowed compression.



Approve Sign



BOM

Part	NO.	Qty
Plunger	B591-P1003	1
Barrel	B591-B1003	1
Spring	B591-S1001	1
Bead	B591-T1000	1

SCALE	10:1	UNIT:mm	THIS DOCUMENT IS THE SOLE PROPERTY OF CFE CORPORATION CO.,LTD., AND SHOULD NOT BE USED IN WHOLE OR IN PART WITHOUT PRIOR WRITTEN PERMISSION.	CFE 东莞市川富电子有限公司 CFE CORPORATION CO.,LTD.
ANGEL	±2°	A4		
0~6	±0.05		SHEET: 1 of 1	
6~30	±0.10	DRAW		PART NO. BP59111
30~150	±0.15	CHECK		FILE NAME BP591XX
GENERAL TOLERANCE UNLESS OTHERWISE NOTED		APPRO		TITLE. Pogo pin

ECN(DCN) NO.	REV	DATE	DESCRIPTION
	D0	2016.01.19	NEW