

Note:

Materials:

.Plunger: Brass 0.125um Au over Ni

.Barrel: Brass 0.125um Au over Ni

.Spring: SUS 304 Au

Mechanical:

.Contact force: 210g±20% at 2.50mm working stroke

.Max. stroke: 2.80mm

.Life test: 20,000 cycles

Electrical:

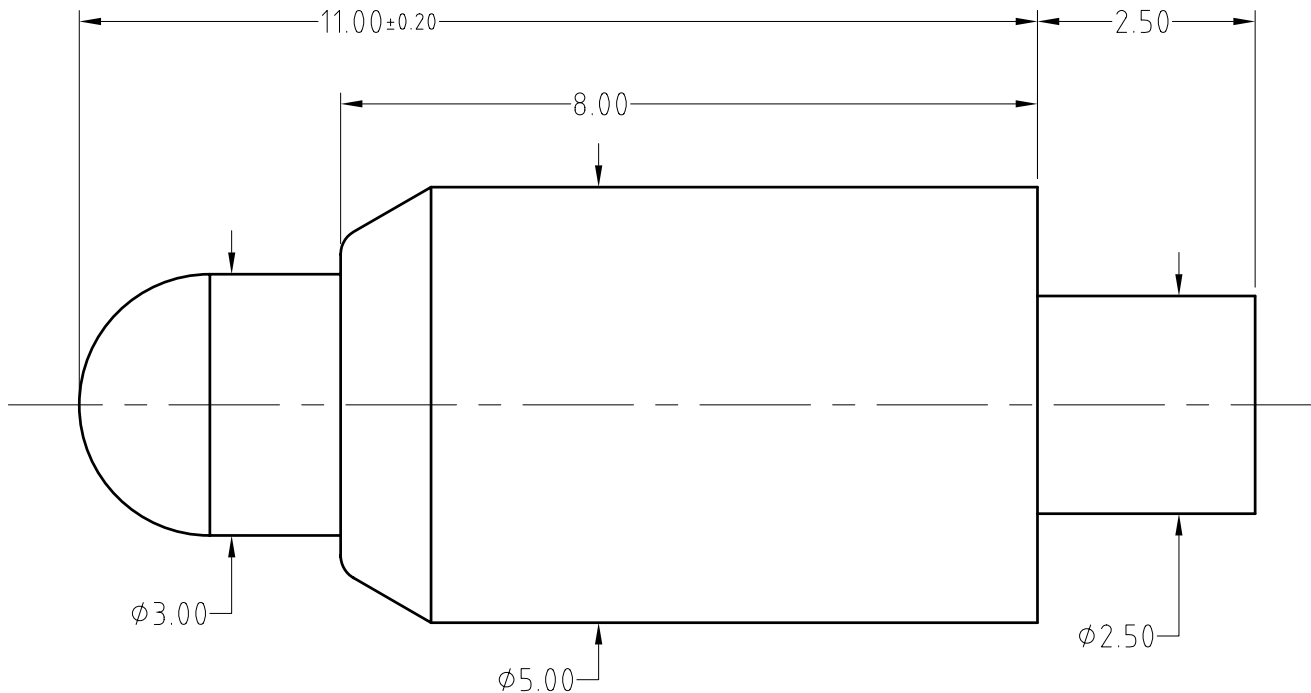
.Rated current & voltage: DC 12V: 3A

.Contact resistance: 50 milliohm Max.

To ensure the best usage, please operate it based on the working height.
Based on the engineering drawings, shall not exceed the maximum allowed compression.



Approve Sign



BOM		
Part	NO.	Qty
Plunger	B959-P1005	1
Barrel	B959-B1005	1
Spring	B959-S1001	1

SCALE	10:1	UNIT:mm	THIS DOCUMENT IS THE SOLE PROPERTY OF CFE CORPORATION CO.,LTD., AND SHOULD NOT BE USED IN WHOLE OR IN PART WITHOUT PRIOR WRITTEN PERMISSION.	东莞市川富电子有限公司 CFE CORPORATION CO.,LTD.
ANGEL	±2°	A4		
0~6	±0.05		SHEET: 1 of 1	
6~30	±0.10	DRAW		PART NO. BP95911
30~150	±0.15	CHECK		FILE NAME BP959XX
GENERAL TOLERANCE UNLESS OTHERWISE NOTED		APPRO		TITLE. Pogo pin

_____	A0	2017.02.16	NEW
ECN(DCN) NO.	REV	DATE	DESCRIPTION