

1

2

3

4

Note:

Materials:

.Plunger: Brass 0.5um Au over Ni

.Barrel: Brass 0.5um Au over Ni

.Spring: SUS surface treatment

Mechanical:

.Contact force: 120g±20% at 1.1mm working stroke

.Max. stroke: 2.3mm

.Life test: 20,000 cycles

Electrical:

.Rated current & voltage: DC 12V, 5A Max.

.Contact resistance: 50 milliohm Max.

Standard tolerances are:

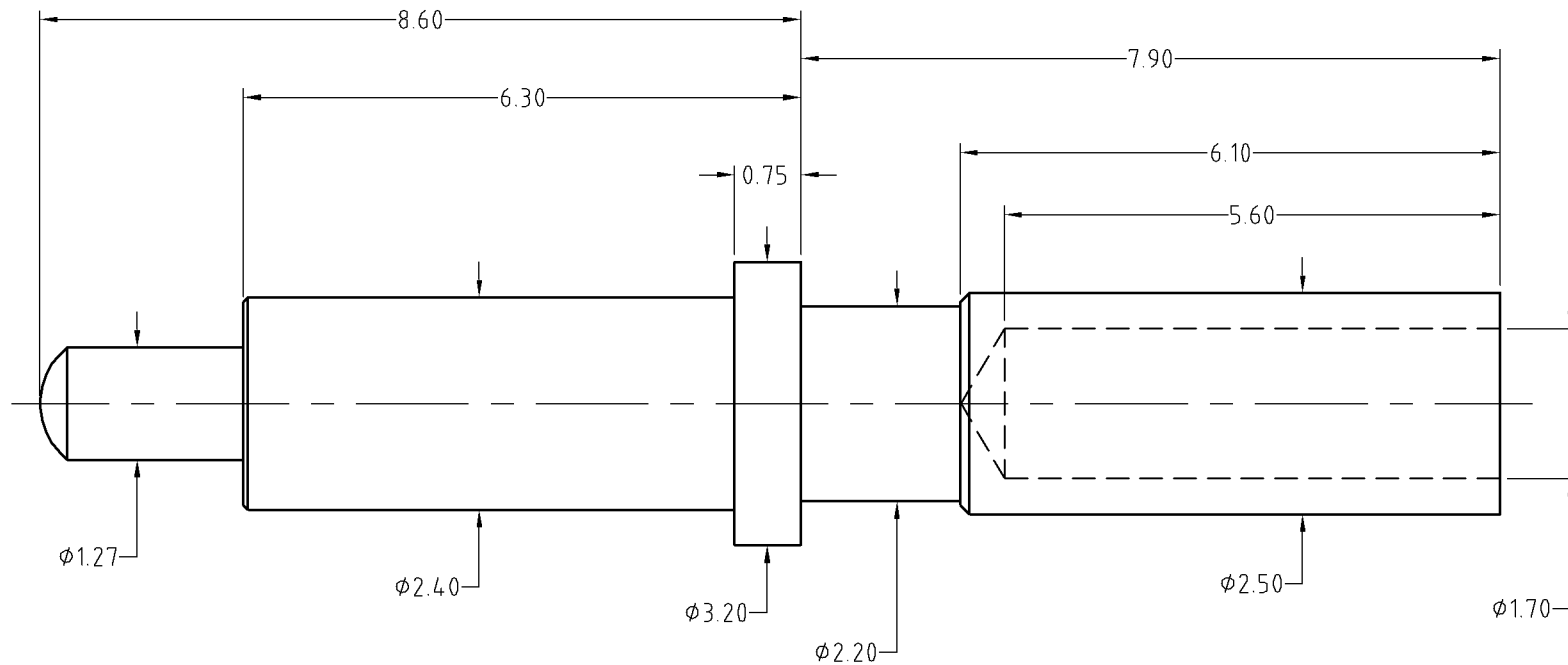
.Diameters: +/-0.05mm

.Lengths: +/-0.15mm

.Angles: +/-2°

To ensure the best usage, please operate it based on the working height.

Based on the engineering drawings, shall not exceed the maximum allowed compression.



Approve Sign

SCALE	10:1	UNIT:mm	THIS DOCUMENT IS THE SOLE PROPERTY OF CFE CORPORATION CO.,LTD., AND SHOULD NOT BE USED IN WHOLE OR IN PART WITHOUT PRIOR WRITTEN PERMISSION.	CFE 东莞市川富电子有限公司 CFE CORPORATION CO.,LTD.
ANGEL	±1°	A4		
0~6	±0.05		SHEET: 1 of 1	
6~30	±0.10	DRAW		PART NO. BS25111
30~150	±0.15	CHECK		FILE NAME BS251XX
GENERAL TOLERANCE UNLESS OTHERWISE NOTED		APPRO		TITLE. Pogo pin connector

ECN(DCN) NO.	A0	2014.08.13	NEW
REV	DATE	DESCRIPTION	