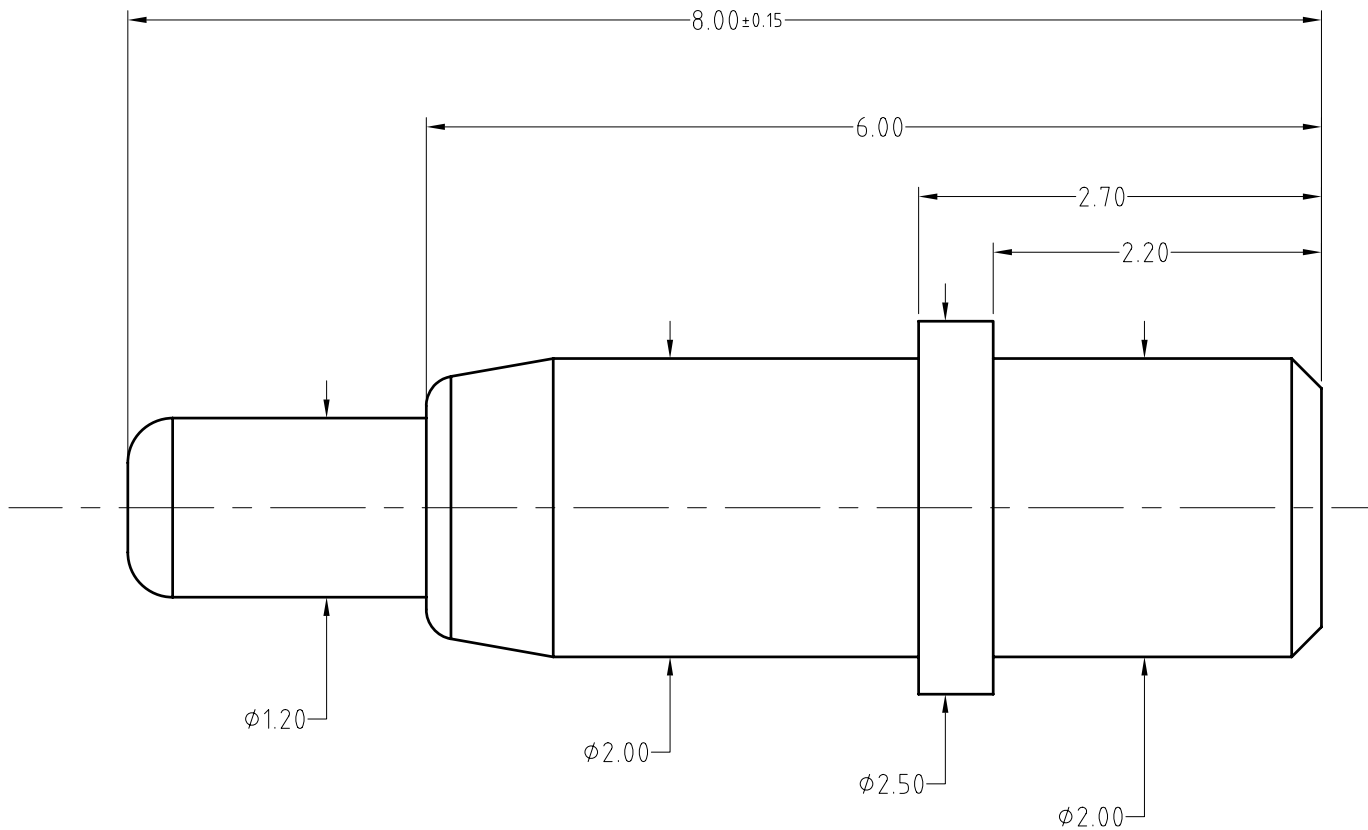


Note:
 Materials:
 .Plunger: Brass 0.125um Au over Ni
 .Barrel: Brass 0.125um Au over Ni
 .Spring: SUS 304 Au
 Mechanical:
 .Contact force: 120g±20% at 1.50mm working stroke
 .Full stroke: 2.0mm
 .Life test: 10,000 cycles
 Electrical:
 .Rated current & voltage: DC 12V; 3A
 .Contact resistance: 50 milliohm Max.

To ensure the best usage, please operate it based on the working height.
 Based on the engineering drawings, shall not exceed the maximum allowed compression.



Approve Sign



BOM		
Part	NO.	Qty
Plunger	B794-P1005	1
Barrel	B794-B1005	1
Spring	B794-S1001	1

SCALE	10:1	UNIT:mm	THIS DOCUMENT IS THE SOLE PROPERTY OF CFE CORPORATION CO.,LTD., AND SHOULD NOT BE USED IN WHOLE OR IN PART WITHOUT PRIOR WRITTEN PERMISSION.	SHEET: 1 of 1	东莞市川富电子有限公司 CFE CORPORATION CO.,LTD.	
ANGEL	±2°	A4				
0~6	±0.05				PART NO.	BF794.11
6~30	±0.10	DRAW			FILE NAME	BF794XX
30~150	±0.15	CHECK			TITLE.	Pogo pin
GENERAL TOLERANCE UNLESS OTHERWISE NOTED		APPRO				

_____	A0	2017.04.12	NEW
ECN(DCN) NO.	REV	DATE	DESCRIPTION