

1

2

3

4

Note:

Materials:

.Plunger: Brass 1.25-2.5um Ni

.Barrel: Brass 1.25-2.5um Ni

.Spring: SUS 304 surface treatment

Mechanical:

.Contact force: 200g±20g at 1.8mm working storke

.Max storke:2.50mm

.Life test: 20,000 cycles

Electrical:

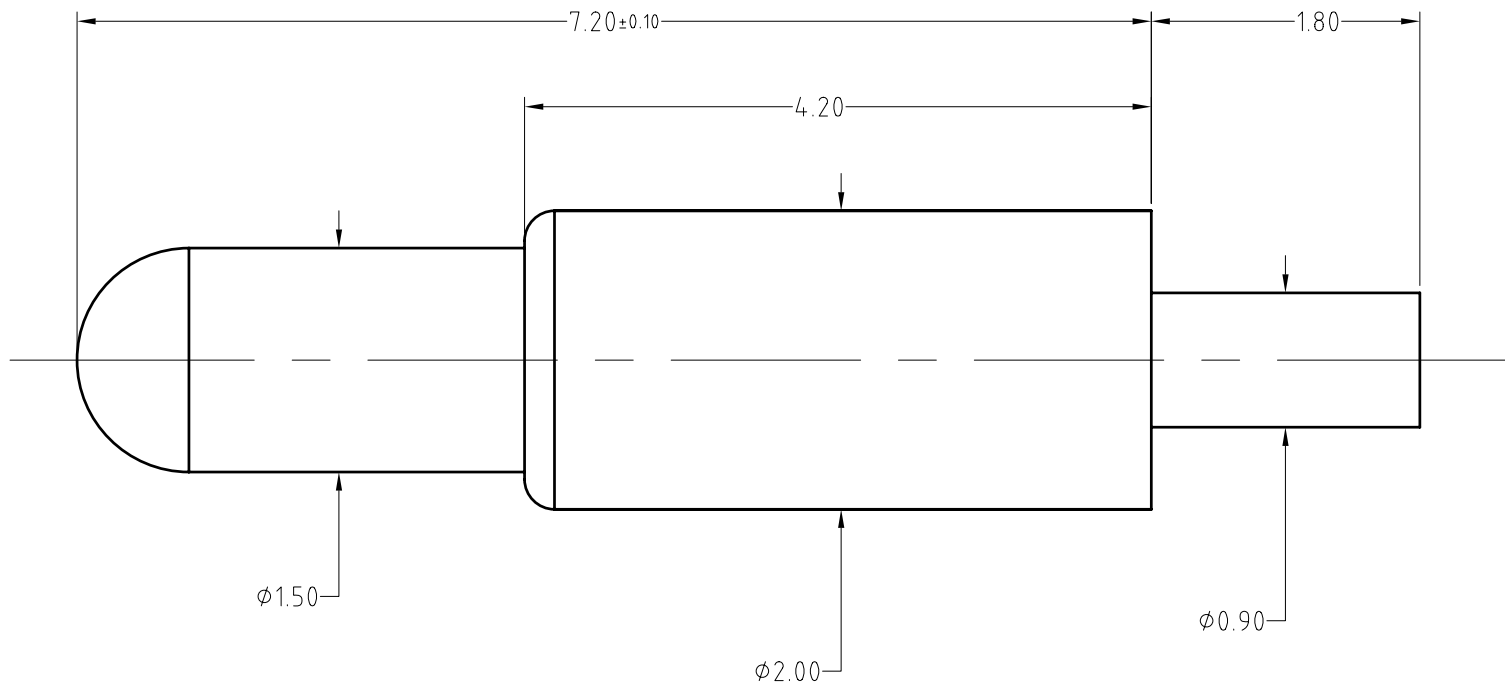
.Rated current & voltage: DC 12V; 1A

.Contact resistance: 50 milliohm Max.

To ensure the best usage, please operate it based on the working height.
Based on the engineering drawings, shall not exceed the maximum allowed compression.



Approve Sign



SCALE	10:1	UNIT:mm	THIS DOCUMENT IS THE SOLE PROPERTY OF CFE CORPORATION CO.,LTD., AND SHOULD NOT BE USED IN WHOLE OR IN PART WITHOUT PRIOR WRITTEN PERMISSION.	东莞市川富电子有限公司 CFE CORPORATION CO.,LTD.
ANGEL	±2°	A4		
0~6	±0.10		SHEET: 1 of 1	
6~30	±0.20	DRAW		PART NO. BP50711
30~150	±0.30	CHECK		FILE NAME BP507XX
GENERAL TOLERANCE UNLESS OTHERWISE NOTED		APPRO		TITLE. Pogo pin

ECN(DCN) NO.	REV	DATE	DESCRIPTION
	A0	2016.03.28	NEW