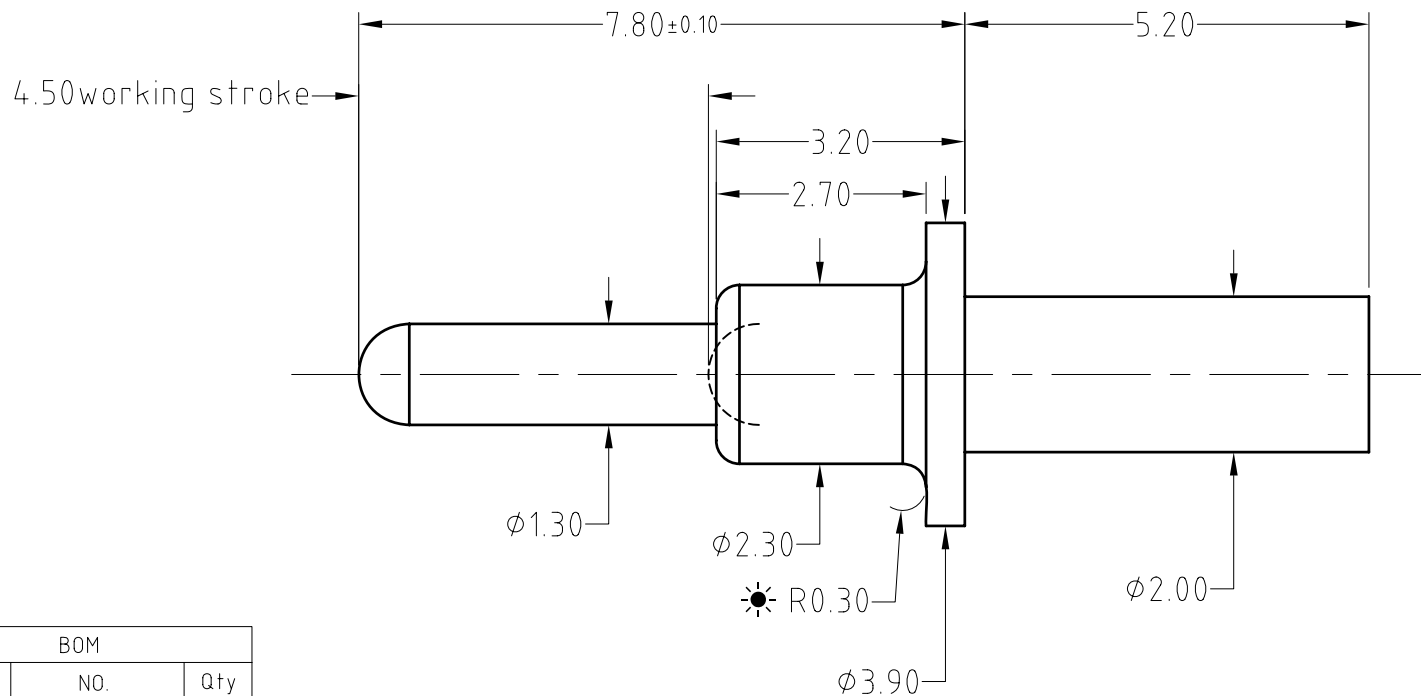


Note:
 Materials:
 .Plunger: Brass 0.25um Au over Ni
 .Barrel: Brass 0.25um Au over Ni
 .Spring: SUS 304 Au
 Mechanical:
 .Contact force: 110g±20% at 4.5mm working stroke
 .Max. compression: 4.7mm
 .Life test: 20,000 cycles
 Electrical:
 .Rated current & voltage: DC 12V; 0.5A
 .Contact resistance: 50 milliohm Max.

To ensure the best usage, please operate it based on the working height.
 Based on the engineering drawings, shall not exceed the maximum allowed compression.



Approve Sign



BOM		
Part	NO.	Qty
Plunger	B538-P1010	1
Barrel	B538-B1010	1
Spring	B538-S1001	1

SCALE	10:1	UNIT:mm	THIS DOCUMENT IS THE SOLE PROPERTY OF CFE CORPORATION CO.,LTD., AND SHOULD NOT BE USED IN WHOLE OR IN PART WITHOUT PRIOR WRITTEN PERMISSION.	东莞市川富电子有限公司 CFE CORPORATION CO.,LTD.	
ANGEL	±2°	A4			
0~6	±0.05				SHEET: 1 of 1
6~30	±0.10	DRAW			PART NO. BP53811
30~150	±0.15	CHECK	FILE NAME BP538XX	TITLE. Pogo pin	
GENERAL TOLERANCE UNLESS OTHERWISE NOTED		APPRO			

_____	A0	2016.03.09	NEW
ECN(DCN) NO.	REV	DATE	DESCRIPTION