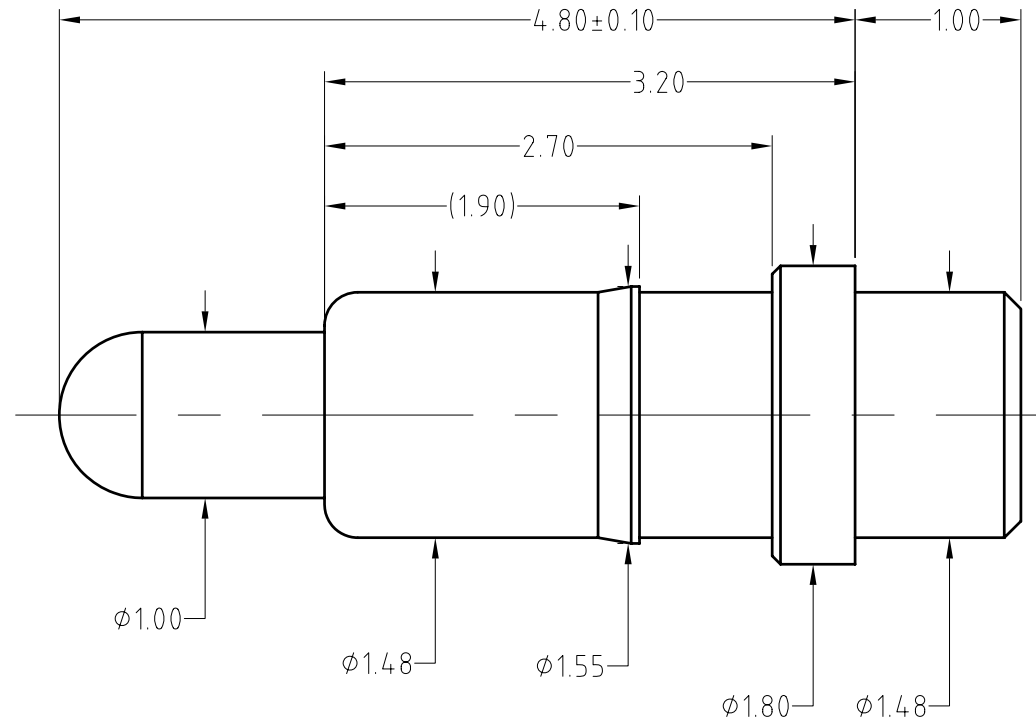


Note:  
 Materials:  
 .Plunger: Brass 0.025um Au over Ni  
 .Barrel: Brass 0.025um Au over Ni  
 .Spring: SUS 304 Au  
 Mechanical:  
 .Contact force: 90g±20g at 1.0mm working stroke  
 .Max. compression: 1.5mm  
 .Life test: 20,000 cycles  
 Electrical:  
 .Rated current & voltage: DC 12V; 1A  
 .Contact resistance: 50 milliohm Max.

To ensure the best usage, please operate it based on the working height.  
 Based on the engineering drawings, shall not exceed the maximum allowed compression.



Approve Sign



BOM		
Part	NO.	Qty
Plunger	B300-P1001	1
Barrel	B545-B1001	1
Spring	B545-S1001	1

SCALE	10:1	UNIT:mm	THIS DOCUMENT IS THE SOLE PROPERTY OF CFE CORPORATION CO.,LTD., AND SHOULD NOT BE USED IN WHOLE OR IN PART WITHOUT PRIOR WRITTEN PERMISSION.
ANGEL	±2°	A4	
0~6	±0.05		SHEET: 1 of 1
6~30	±0.10	DRAW	
30~150	±0.15	CHECK	
GENERAL TOLERANCE UNLESS OTHERWISE NOTED		APPRO	

**CFE** 东莞市川富电子有限公司  
 CFE CORPORATION CO.,LTD.

ECN(DCN) NO.	REV	DATE	DESCRIPTION
	T1	2016.09.22	
	A0	2015.12.21	NEW

PART NO.	BP54511
FILE NAME	BP545XX
TITLE.	Pogo pin