

Note:

Materials:

.Plunger: Brass 0.5um Au over Ni

.Barrel: Brass 0.25um Au over Ni

.Spring: SUS 304 Au

Mechanical:

.Contact force: 120g±20% at 4.0 working stroke

.Max. compression:5.0mm

.Life test: 20,000 cycles

Electrical:

.Rated current & voltage: DC 12V; 3A

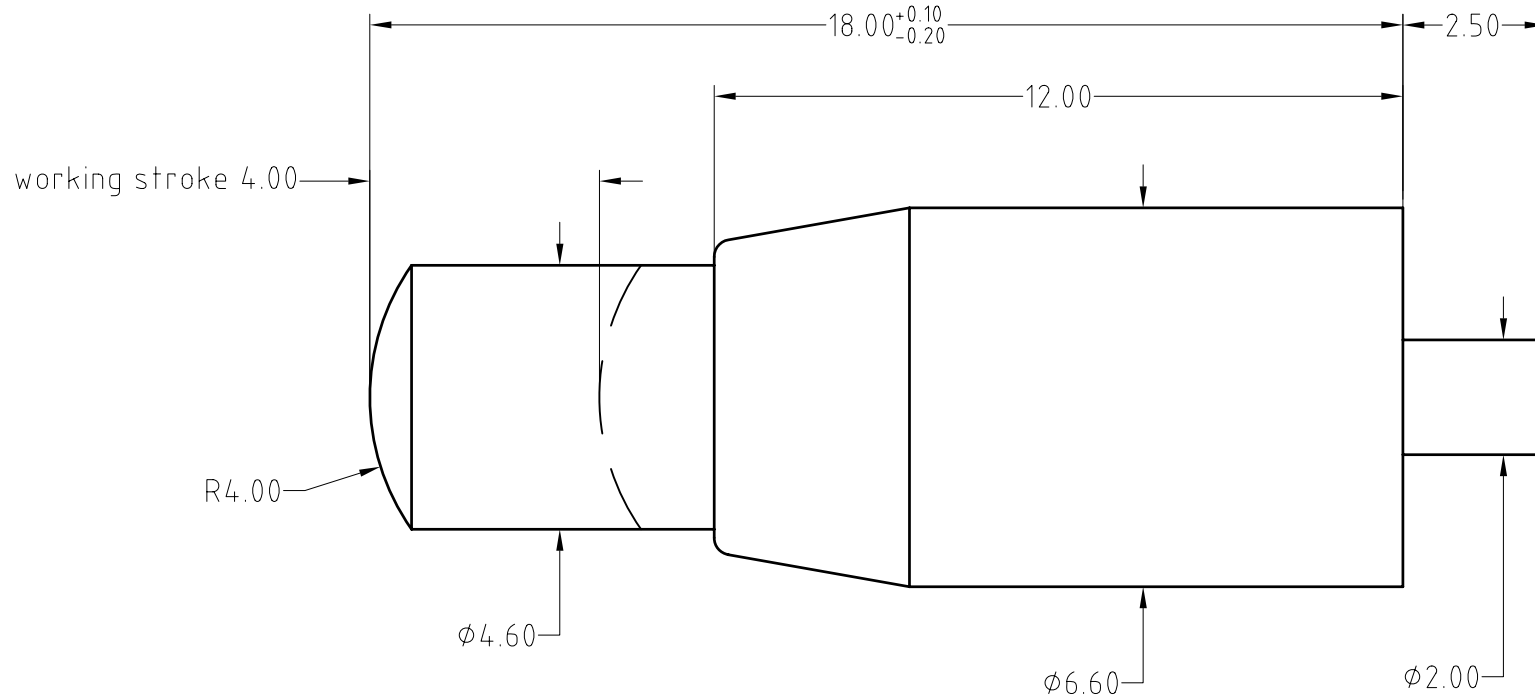
.Contact resistance: 50 milliohm Max.

To ensure the best usage, please operate it based on the working height.


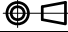
Based on the engineering drawings, shall not exceed the maximum allowed compression.



Approve Sign



BOM		
Part	NO.	Qty
Plunger	B567-P1020	1
Barrel	B567-B1010	1
Spring	B567-S1001	1

SCALE	10:1	UNIT:mm	THIS DOCUMENT IS THE SOLE PROPERTY OF CFE CORPORATION CO.,LTD., AND SHOULD NOT BE USED IN WHOLE OR IN PART WITHOUT PRIOR WRITTEN PERMISSION.	SHEET: 1 of 1	 东莞市川富电子有限公司 CFE CORPORATION CO.,LTD.	
ANGEL	±2°	A4				
0~6	±0.05				PART NO.	BP56711
6~30	±0.10	DRAW			FILE NAME	BP567XX
30~150	±0.15	CHECK			TITLE.	Pogo pin
GENERAL TOLERANCE UNLESS OTHERWISE NOTED		APPRO				

ECN(DCN) NO.	REV	DATE	DESCRIPTION
	A0	2016.02.18	NEW