

1

2

3

4

Note:

Materials:

.Plunger: Brass 0.125um Au over Ni

.Barrel: Brass 0.125um Au over Ni

.Spring: SUS Au

Mechanical:

.Contact force: 70g±20g at 1.0mm working stroke

.Full stroke: 1.4mm

.Life test: 20,000 cycles

Electrical:

.Rated current & voltage: DC12V; 3A Max.

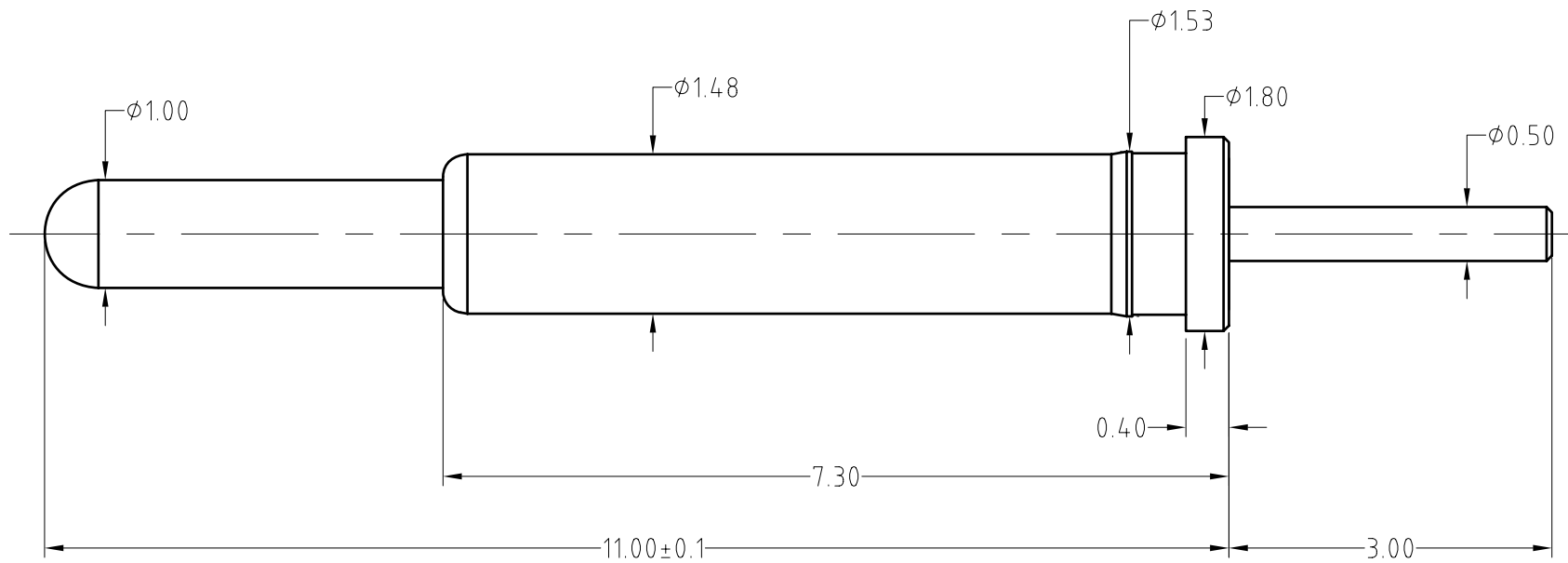
.Contact resistance: 50 milliohm Max.

To ensure the best usage, please operate it based on the working height.

Based on the engineering drawings, shall not exceed the maximum allowed compression.



Approve Sign



SCALE	10:1	UNIT:mm	THIS DOCUMENT IS THE SOLE PROPERTY OF CFE CORPORATION CO.,LTD., AND SHOULD NOT BE USED IN WHOLE OR IN PART WITHOUT PRIOR WRITTEN PERMISSION.	
ANGEL	$\pm 1^\circ$	A4	SHEET: 1 of 1	
0~6	± 0.05			
6~30	± 0.10	DRAW	PART NO.	BP27911
30~150	± 0.15	CHECK	FILE NAME	BP279XX
GENERAL TOLERANCE UNLESS OTHERWISE NOTED		APPRO	TITLE.	Pogo pin connector



ECN(DCN) NO.	A0	2014.12.03	NEW
REV	DATE	DESCRIPTION	