

1

2

3

4

Note:

Materials:

.Insulator: Black high temperature plastics U194 V-0

.Plunger: Brass 0.375um Au over Ni

.Barrel: Brass 0.375um Au over Ni

.Spring: SUS surface treatment

A Mechanical:

.Contact force: 180g±20% at 1.0mm working stroke

.Full stroke:1.10mm

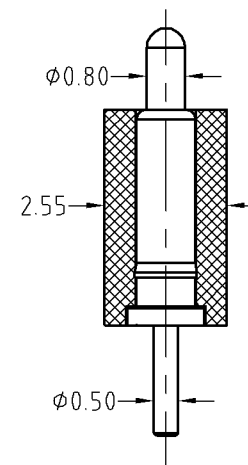
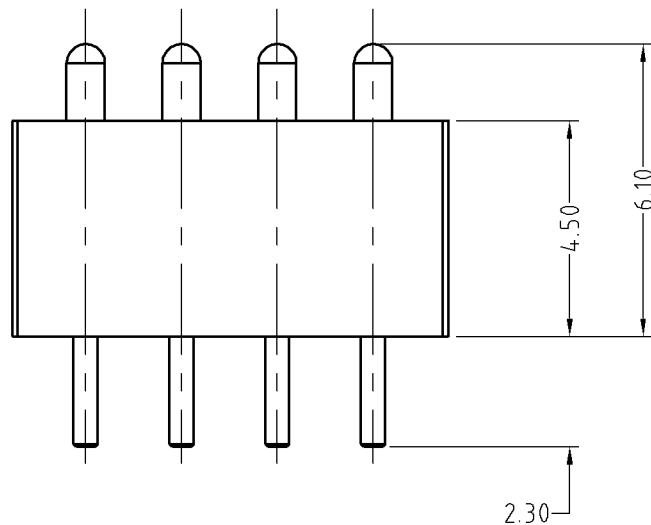
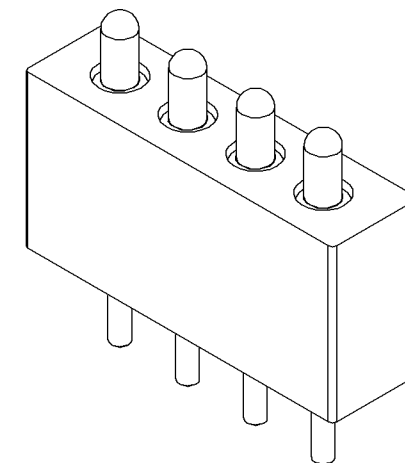
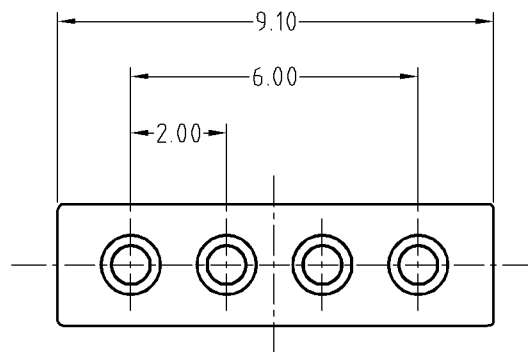
.Life test: 10,000 cycles

Electrical:

.Rated current & voltage: DC 12V; 1A

.Contact resistance: 50 milliohm Max.

To ensure the best usage, please operate it based on the working height.
Based on the engineering drawings, shall not exceed the maximum allowed compression.



BOM		
Part	NO.	Qty
Pogo pin	BP29211	4
Housing	B292-H1000	1

SCALE	10:1	UNIT:mm	THIS DOCUMENT IS THE SOLE PROPERTY OF CFE CORPORATION CO.,LTD., AND SHOULD NOT BE USED IN WHOLE OR IN PART WITHOUT PRIOR WRITTEN PERMISSION.	东莞市川富电子有限公司 CFE CORPORATION CO.,LTD.	
ANGEL	±1°	A4			
0~6	±0.05		SHEET: 1 of 1	PART NO.	BP29211-04200H0A
6~30	±0.10	DRAW		FILE NAME	BP292XX
30~150	±0.15	CHECK		TITLE	Pogo pin connector
GENERAL TOLERANCE UNLESS OTHERWISE NOTED		APPRO			

_____	A0	2015.01.16	NEW
ECN(DCN) NO.	REV	DATE	DESCRIPTION