

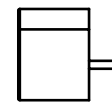
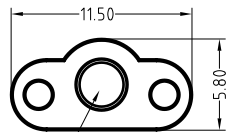
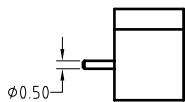
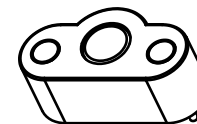
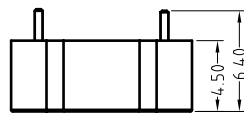
1

2

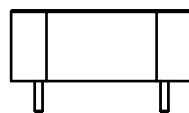
3

4

Note: (注意)
 Electrical: (电气性能)
 Rated current & voltage: DC 12V, 2A
 (额定电压, 电流: DC 12V, 2A)
 Contact resistance: 50 milliohm Max.
 (接触阻抗: 50 milliohm Max.)
 100% open & short test.
 (100%导通, 短路测试)



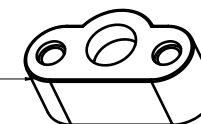
S Docking magnet force 220 g.
 (S极 对接端吸附力为220g)



Pin
 (Pin针)



Housing
 (胶芯)



Magnet
 (磁铁)



SCALE	10:1	UNIT:mm	THIS DOCUMENT IS THE SOLE PROPERTY OF CFE CORPORATION CO.,LTD., AND SHOULD NOT BE USED IN WHOLE OR IN PART WITHOUT PRIOR WRITTEN PERMISSION.	
ANGEL	±1°	A4	SHEET: 1 of 1	
0~6	±0.10			
6~30	±0.20	DRAW	PART NO.	M-BP50321-02800H0F
30~150	±0.30	CHECK	FILE NAME	BP503XX
GENERAL TOLERANCE UNLESS OTHERWISE NOTED	APPRO		TITLE	Magnetic Cable Connector



ECN(DCN) NO.	A0	2015.10.08	NEW
REV	DATE	DESCRIPTION	